

TOWN OF GIBSONS

Bylaw No. 1239, 2017

Road Closure Bylaw (Winn Road)

WHEREAS, pursuant to Section 40 of the *Community Charter*, Council may, by bylaw, close a portion of a highway to traffic and remove the dedication of the highway if, prior to adopting the bylaw, Council publishes notices of its intention in a newspaper and provides an opportunity for persons who consider they are affected by the bylaw to make representations to Council;

AND WHEREAS the Council of the Town of Gibsons deems it expedient to close to traffic, remove the dedication of highway, and dispose of that portion of highway comprising approximately 950.2 square metres known as Winn Road dedicated as highway by Plan 5579, District Lot 685, Group 1, New Westminster District, which is shown outlined in bold black on Reference Plan EPP62124, prepared and certified by Harry E. Hickman, B.C.L.S. on the 31st day of March, 2017 (the "Road Closure Plan");

AND WHEREAS notices of Council's intention to close that portion of highway to traffic and to remove its dedication as highway were published in a newspaper and posted in the public notice posting place, and Council has provided an opportunity for persons who consider they are affected by the closure and disposition to make representations to Council;

AND WHEREAS the Council does not consider that the closure of the Closed Road will affect the transmission or distribution facilities or works of utility operators;

NOW THEREFORE the Council of the Town of Gibsons, in open meeting assembled, enacts as follows:

1. Attached to this Bylaw as Schedule "A" and forming part of this Bylaw is a reduced copy of the Road Closure Plan.
2. The Town hereby authorizes the closure to traffic and removal of highway dedication of the approximately 950.2 square metre portion of highway (which was dedicated as highway at the Vancouver Land Title Office by Plan 5579, District Lot 685, Group 1, New Westminster District), labeled "Road to be Closed" on the Road Closure Plan (the "Closed Road").
3. On deposit of the Road Closure Plan and all other documentation for the closure of the Closed Road in the Vancouver Land Title Office, the Closed Road is closed to public traffic, it shall cease to be public highway, and its dedication as a highway is cancelled.
4. The Mayor and Corporate Officer are authorized to execute all deeds of land, plans and other documentation necessary to effect this road closure.

5. This Bylaw may be cited as “Town of Gibsons, Road Closure Bylaw (Winn Road) No. 1239, 2017”.

READ a First Time this 20th day of June 2017

READ a Second Time this 20th day of June 2017

READ a Third Time this 20th day of June 2017

ADOPTED this day of 2017

Wayne Rowe, Mayor

Selina Williams, Corporate Officer

SCHEDULE "A"

Reference Plan of Closed Road

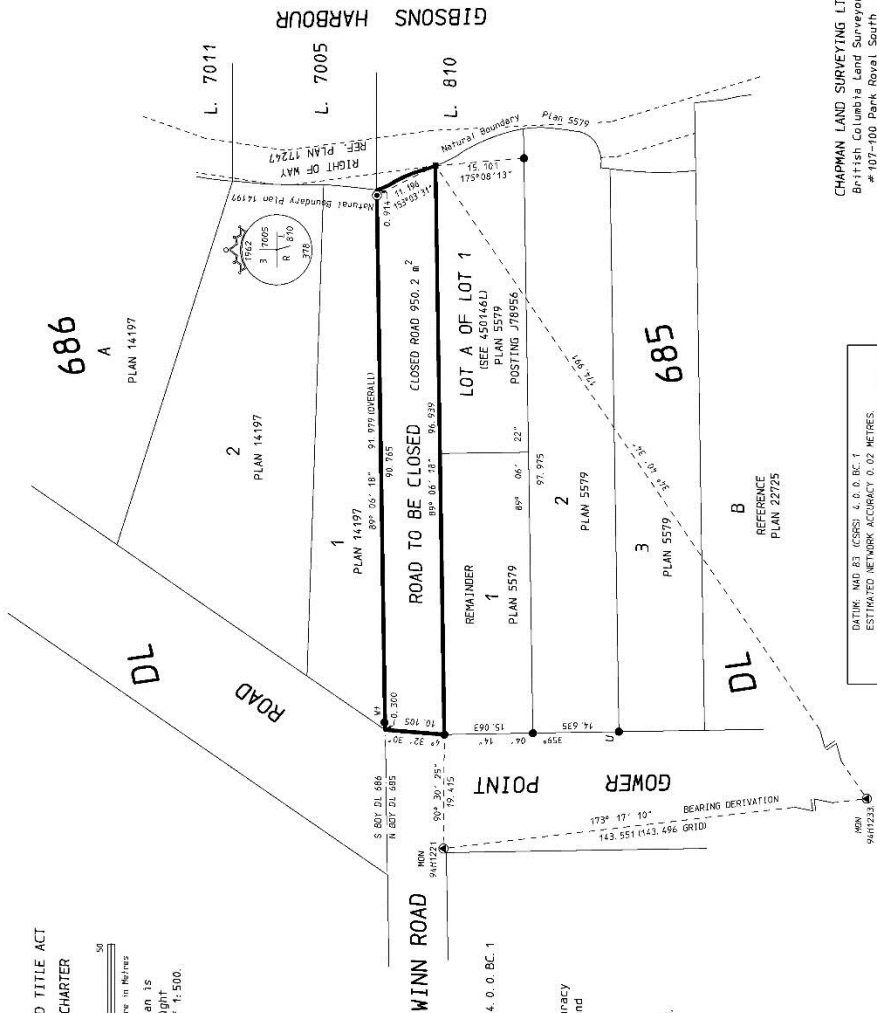
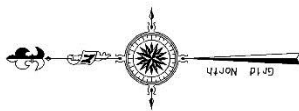
PLAN EPP62124

REFERENCE PLAN TO ACCOMPANY BYLAW NO. 1239, 2016
 TOWN OF GIBSONS TO CLOSE PART OF ROAD
 DEDICATED ON PLAN 5579, DISTRICT LOT 685
 GROUP 1, NEW WESTMINSTER DISTRICT

BCGS 92G.043

PURSUANT TO SECTION 120 OF THE LAND TITLE ACT
 AND SECTION 40 OF THE COMMUNITY CHARTER

All Distances are in Metres
 The intended plot size of this plan is
 560 millimetres which by 1:32 is in eight
 (8) centimetres when plotted at a scale of 1:500.



GLOSS

Integrated Survey Area No. 52, Town of Gibson, IMB83 (CSRS) 4.0.0.BC.1
 Grid bearings are derived from observations between
 geodetic control monuments 94H1221 and 94H1233
 The UTM coordinates and estimated horizontal positional accuracy
 are derived from the Mercur published coordinates and
 standard deviation for geodetic control monuments
 94H1221 and 94H1233.

This plan shows horizontal ground-level measured distances
 except where otherwise noted. To compute grid distances,
 multiply ground-level distances by combined factor 0.9996183.

- ⊙ denotes standard concrete post found in place.
- ⊙ denotes old Control Monument found.
- ⊙ denotes standard iron post found in place.
- denotes lead plug found in place.
- denotes unregistered.
- WT denotes witness.

Note:
 This plan shows one or more witness posts which are set along
 the production of the property boundary unless otherwise noted.

THE FIELD SURVEY REPRESENTED BY THIS PLAN
 WAS COMPLETED ON THE 12TH DAY OF JANUARY, 2017.
 HARRY EDMOND HICKMAN, BCLS# 624

THIS PLAN LIES WITHIN THE
 SUNSHINE COAST REGIONAL DISTRICT.

POINT	NORTHING	EASTING	POINT COMBINED SCALE FACTOR
94H1221	5472004.004	463805.991	0.9996178
94H1233	5471881.029	463862.767	0.9996167

CHAPMAN LAND SURVEYING LTD.
 British Columbia Land Surveyors
 #107-100 Park Royal South
 WEST VANCOUVER, B.C.
 V7T 1A2 604-926-7311
 FAX 604-926-6923
 EMAIL: sandy@chaplansurveying.com

GIBSONS: B-2339 (1) JOB: 16-078 FILE: 197A COMP: 197A-1.RRP