



# HEALTHY HARBOUR PROJECT

Virtual Report  
Dec 15, 2020



# AN ENVIRONMENTAL COMMUNITY PARTNERSHIP

## Supporting the Natural Asset Management of Gibsons Harbour

### 1. DATA GATHERING

Data collection & surveying,  
mapping & reporting

### 2. POLICY RECOMMENDATIONS

Support Town Council and staff by  
providing science-based information  
for decision-making

### 3. COMMUNITY EDUCATION

Build stewardship capacity in residents  
and visitors. Provide community  
education and knowledge mobilization.  
Undertake long-term environmental  
monitoring of assets

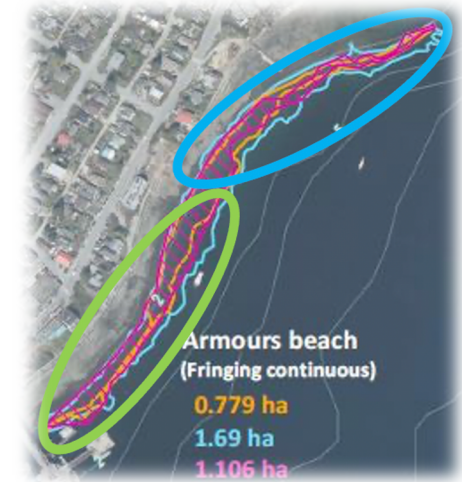


Photo Credit: Coastal Photography Studio



# WHAT WE LEARNED

1. The armours beach eelgrass bed is productive habitat
2. Human impact is minimal at the north end and more exploration is needed in 2021, around the Harbour facility
3. The Breakwater beds have more fragmentation by human impact
4. Eelgrass is above 4m chart datum in Gibsons Harbour





## WHY IT IS IMPORTANT

1. Eelgrass beds provide infrastructure services of storm surge, flood and erosion protection
2. Co-benefits of carbon sequestration, habitat for biodiversity, support of commercially harvested species
3. Conservation and protection much cheaper than restoration
4. We need to continue to prevent damages, now we are restoring eelgrass beds

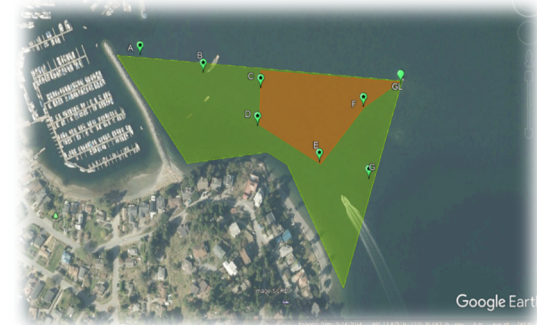
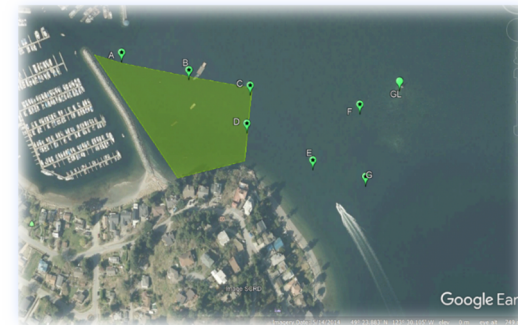
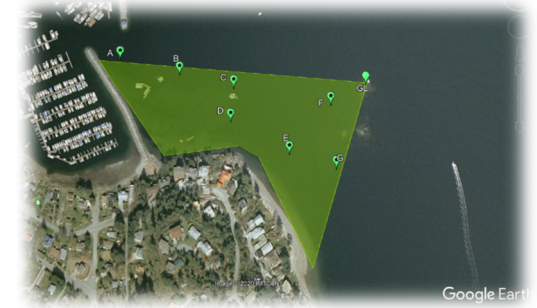


# POTENTIAL CONSIDERATIONS

- Manion Bay – Bowen Island has an existing model
- Establishing eelgrass conservation zones
- Bylaw development
- Bylaw enforcement
- Phased implementation
- Capital and operating costs
- Permits for moorage
- Recreational activities
- Stakeholder input

## WHAT HAPPENS NEXT?

A review of our recommendations





# HOW WE GET THERE...

## *A vibrant, healthy harbour*

1. Support Town planning staff
2. Apply for funding
3. Create harbour guide communications
4. Implement conservation zones
5. Continue restoration activities



## UPCOMING Ocean Events

Wednesday December  
16th – Dr. Aroha Miller,  
Manager Ocean Watch  
Program, for Ocean  
Wise – 630 pm virtual

Wednesday January  
13<sup>th</sup> – Fiona Beaty, PhD  
candidate UBC, Project  
Director, MakeWay, of  
the Howe Sound  
Marine Reference  
Guide – 630 pm virtual

Find us on FB @ nsmec



## THANK YOU, TOWN OF GIBSONS COUNCIL AND STAFF FOR YOUR SUPPORT!



## Questions?

My contact: [graham@gibsonsmarine-ed.org](mailto:graham@gibsonsmarine-ed.org)