

SEAL:

TREE SCHEDULE

KEY	QTY	BOTANICAL NAME	COMMON NAME	PLANTED SIZE / REMARKS
4		LIQUIDAMBAR STYRACIFLUA 'WORPLESDON'	WORPLESDON SWEET GUM	6CM CAL: 2M STD; B&B
3		QUERCUS PALUSTRIS 'GREEN PILLAR'	GREEN PILLAR PIN AK	6CM CAL: 1.2M STD; B&B
20		THUJA PLICATA	WESTERN RED CEDAR	2.5M HT. B&B

NOTES: * PLANT SIZES IN THIS LIST ARE SPECIFIED ACCORDING TO THE BC LANDSCAPE STANDARD AND CANADIAN LANDSCAPE STANDARD, LATEST EDITION. CONTAINER SIZES SPECIFIED AS PER CNLA STANDARD. BOTH PLANT SIZE AND CONTAINER SIZE ARE THE MINIMUM ACCEPTABLE SIZES. * REFER TO SPECIFICATIONS FOR DEFINED CONTAINER MEASUREMENTS AND OTHER PLANT MATERIAL REQUIREMENTS. * SEARCH AND REVIEW: MAKE PLANT MATERIAL AVAILABLE FOR OPTIONAL REVIEW BY LANDSCAPE ARCHITECT AT SOURCE OF SUPPLY. AREA OF SEARCH TO INCLUDE LOWER MAINLAND AND FRASER VALLEY. * SUBSTITUTIONS: OBTAIN WRITTEN APPROVAL FROM THE LANDSCAPE ARCHITECT PRIOR TO MAKING ANY SUBSTITUTIONS. TO THE SPECIFIED MATERIAL. UNAPPROVED SUBSTITUTIONS WILL BE REJECTED. ALLOW A MINIMUM OF FIVE DAYS PRIOR TO DELIVERY FOR REQUEST TO SUBSTITUTE. SUBSTITUTIONS ARE SUBJECT TO BC LANDSCAPE STANDARD AND CANADIAN LANDSCAPE STANDARD - DEFINITION OF CONDITIONS OF AVAILABILITY. * ALL LANDSCAPE MATERIAL AND WORKMANSHIP MUST MEET OR EXCEED BC LANDSCAPE STANDARD AND CANADIAN LANDSCAPE STANDARD LATEST EDITION. * ALL PLANT MATERIAL MUST BE PROVIDED FROM CERTIFIED DISEASE FREE NURSERY. * BIO-SOLIDS NOT PERMITTED IN GROWING MEDIUM UNLESS AUTHORIZED BY LANDSCAPE ARCHITECT.



36" MADISON PLANTERS BY NORTHWEST LANDSCAPE SUPPLY



MAGLIN BENCH - MLB870 IPE, GUNMETAL



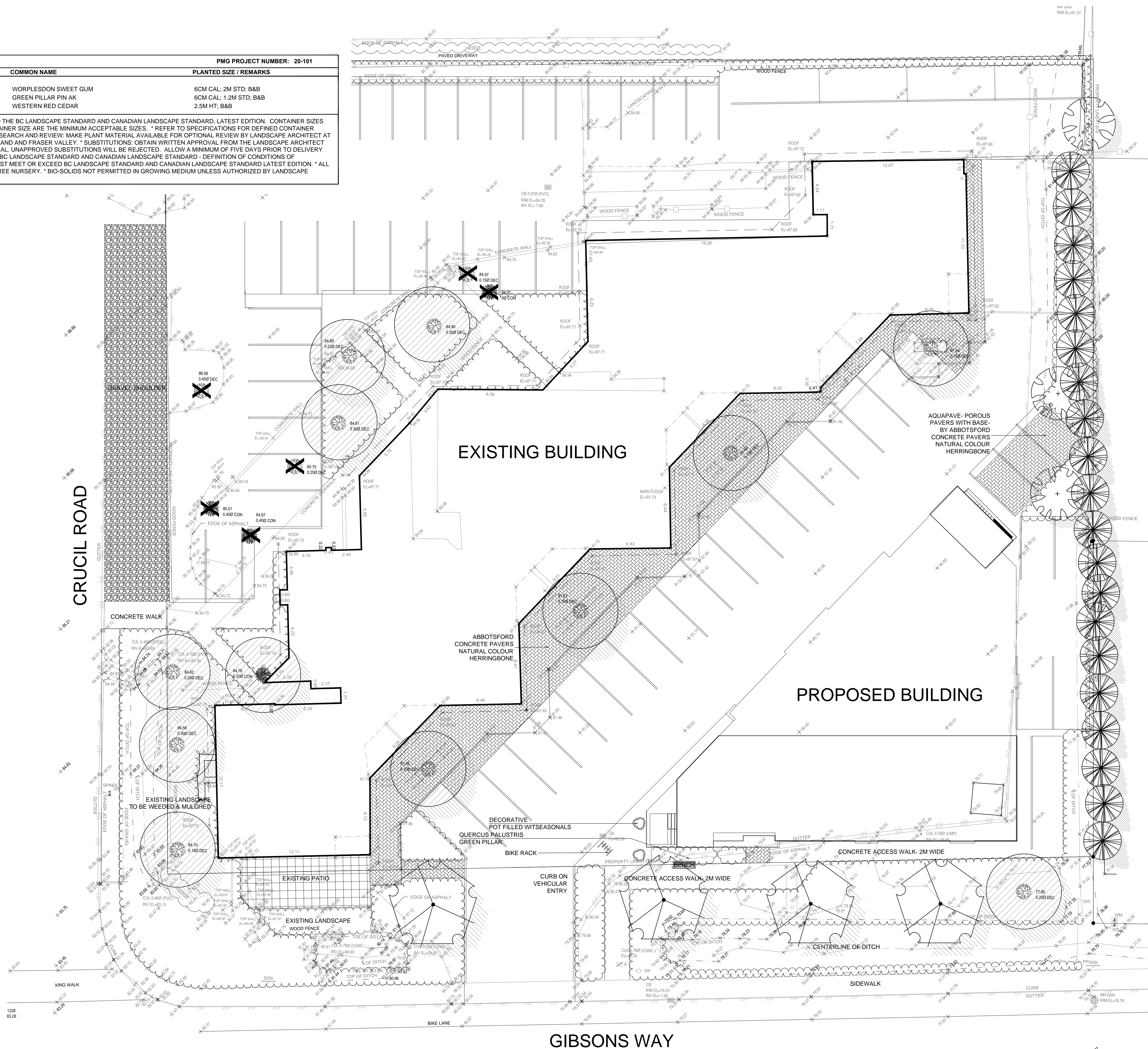
CORA BIKE RACK W3606



QUERCUS PALUSTRIS 'GREEN PILLAR'



LIQUIDAMBAR S WORPLESDON



NO.	DATE	REVISION DESCRIPTION	DR.
1	20.SEP.08	NEW SITE PLAN	JR

CLIENT:

PROJECT:
**MIXED USE
INFILL
DEVELOPMENT**

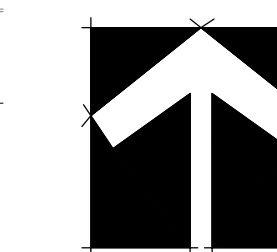
**682 GIBSONS WAY
GIBSONS, BC**

DRAWING TITLE:
**LANDSCAPE
PLAN**

DATE: 20.AUG.26 DRAWING NUMBER:
SCALE: 1:100
DRAWN: JR
DESIGN: JR
CHK'D: PC

L1

OF 3



20101-2-ZIP

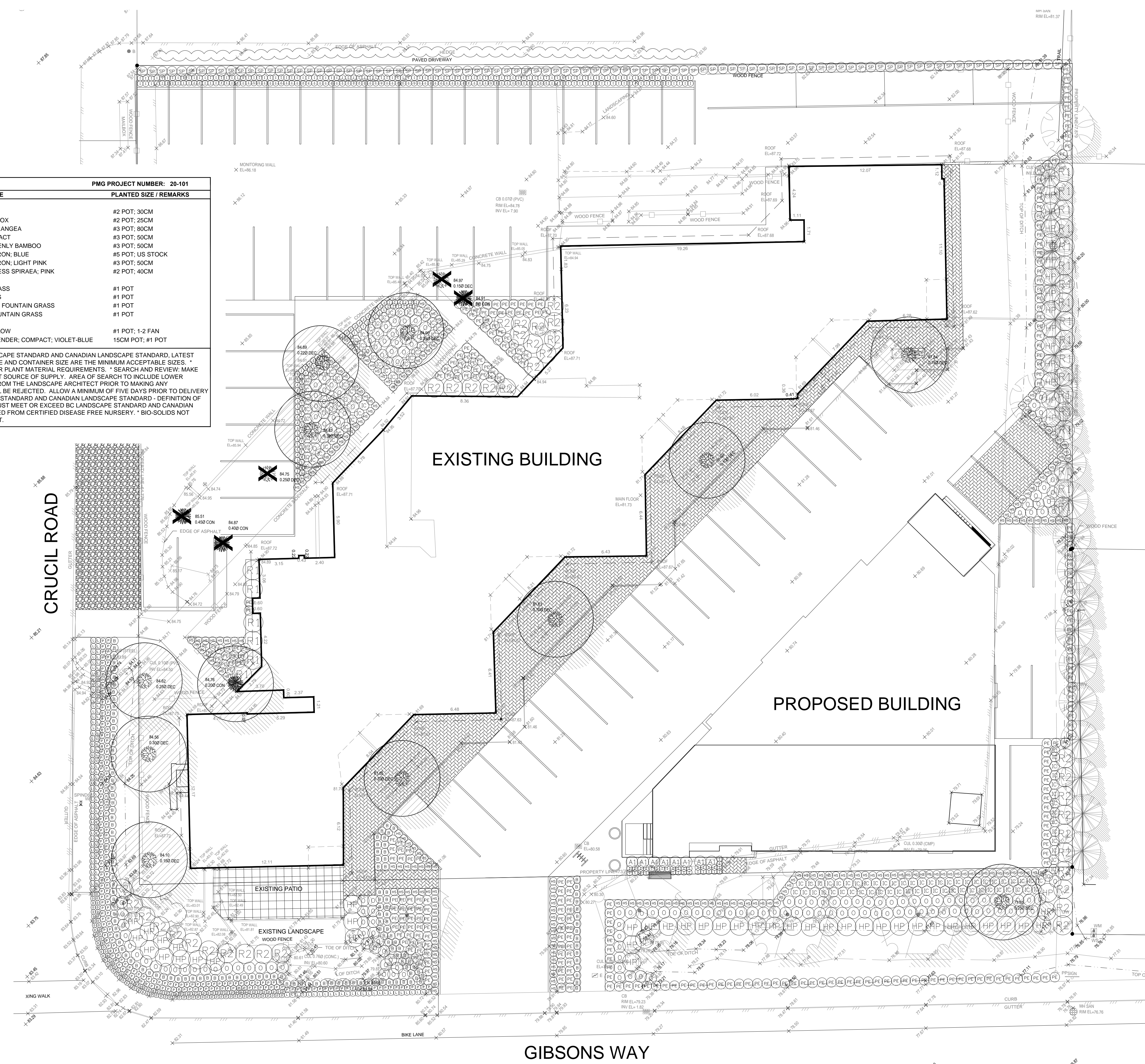
PMG PROJECT NUMBER:

20-101

SEAL:

SHRUB SCHEDULE				PMG PROJECT NUMBER: 20-101
KEY	QTY	BOTANICAL NAME	COMMON NAME	PLANTED SIZE / REMARKS
SHRUB				
(A)	8	ABELIA X EDWARD GOUCHER	PINK ABELIA	#2 POT; 30CM
(B)	144	BUXUS MICROPHYLLA 'WINTER GEM'	LITTLE LEAF BOX	#2 POT; 25CM
(C)	57	HYDRANGEA PANICULATA 'BIG BEN'	BIG BEN HYDRANGEA	#3 POT; 60CM
(D)	121	ILEX CRENATA 'GREEN THUMB'	HOLLY; COMPACT	#3 POT; 50CM
(E)	168	NANDINA DOMESTICA 'MOONBAY'	DWARF HEAVENLY BAMBOO	#3 POT; 50CM
(F)	36	RHODODENDRON 'ANAH KRUSCHKE'	RHODODENDRON; BLUE	#5 POT; US STOCK
(G)	24	RHODODENDRON 'COTTON CANDY'	RHODODENDRON; LIGHT PINK	#3 POT; 50CM
(H)	94	SPIRAEA JAPONICA 'LITTLE PRINCESS'	LITTLE PRINCESS SPIRAEA; PINK	#2 POT; 40CM
GRASS				
(I)	224	HELICTOTRICHON SEMPERVIRENS	BLUE OAT GRASS	#1 POT
(J)	318	IMPERATA CYLINDRICA 'RED BARON'	BLOOD GRASS	#1 POT
(K)	206	PENNISETUM ALOPECUROIDES 'LITTLE BUNNY'	LITTLE BUNNY FOUNTAIN GRASS	#1 POT
(L)	279	PENNISETUM ORIENTALE	ORIENTAL FOUNTAIN GRASS	#1 POT
PERENNIAL				
(M)	113	HEMEROCALLIS 'STELLA D'ORO'	DAYLILY; YELLOW	#1 POT; 1-2 FAN
(N)	119	LAVENDULA ANGUSTIFOLIA 'MUNSTEAD'	ENGLISH LAVENDER; COMPACT; VIOLET-BLUE	15CM POT; #1 POT

NOTES: * PLANT SIZES IN THIS LIST ARE SPECIFIED ACCORDING TO THE BC LANDSCAPE STANDARD AND CANADIAN LANDSCAPE STANDARD, LATEST EDITION. CONTAINER SIZES SPECIFIED AS PER CNLA STANDARD. BOTH PLANT SIZE AND CONTAINER SIZE ARE THE MINIMUM ACCEPTABLE SIZES. * REFER TO SPECIFICATIONS FOR DEFINED CONTAINER MEASUREMENTS AND OTHER PLANT MATERIAL REQUIREMENTS. * SEARCH AND REVIEW: MAKE PLANT MATERIAL AVAILABLE FOR OPTIONAL REVIEW BY LANDSCAPE ARCHITECT AT SOURCE OF SUPPLY. AREA OF SEARCH TO INCLUDE LOWER MAINLAND AND FRASER VALLEY. * SUBSTITUTIONS: OBTAIN WRITTEN APPROVAL FROM THE LANDSCAPE ARCHITECT PRIOR TO MAKING ANY SUBSTITUTIONS TO THE SPECIFIED MATERIAL. UNAPPROVED SUBSTITUTIONS WILL BE REJECTED. ALLOW A MINIMUM OF FIVE DAYS PRIOR TO DELIVERY FOR REQUEST TO SUBSTITUTE. SUBSTITUTIONS ARE SUBJECT TO BC LANDSCAPE STANDARD AND CANADIAN LANDSCAPE STANDARD. DEFINITION OF CONDITIONS OF AVAILABILITY. * ALL LANDSCAPE MATERIAL AND WORKMANSHIP MUST MEET OR EXCEED BC LANDSCAPE STANDARD AND CANADIAN LANDSCAPE STANDARD LATEST EDITION. * ALL PLANT MATERIAL MUST BE PROVIDED FROM CERTIFIED DISEASE FREE NURSERY. * BIO-SOLIDS NOT PERMITTED IN GROWING MEDIUM UNLESS AUTHORIZED BY LANDSCAPE ARCHITECT.



NO.	DATE	REVISION DESCRIPTION	DR.
1	20.SEP.08	NEW SITE PLAN	JR

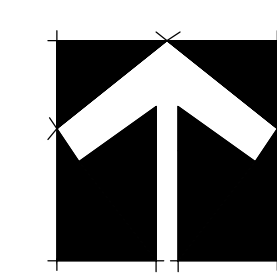
CLIENT:

PROJECT:
**MIXED USE
INFILL
DEVELOPMENT**

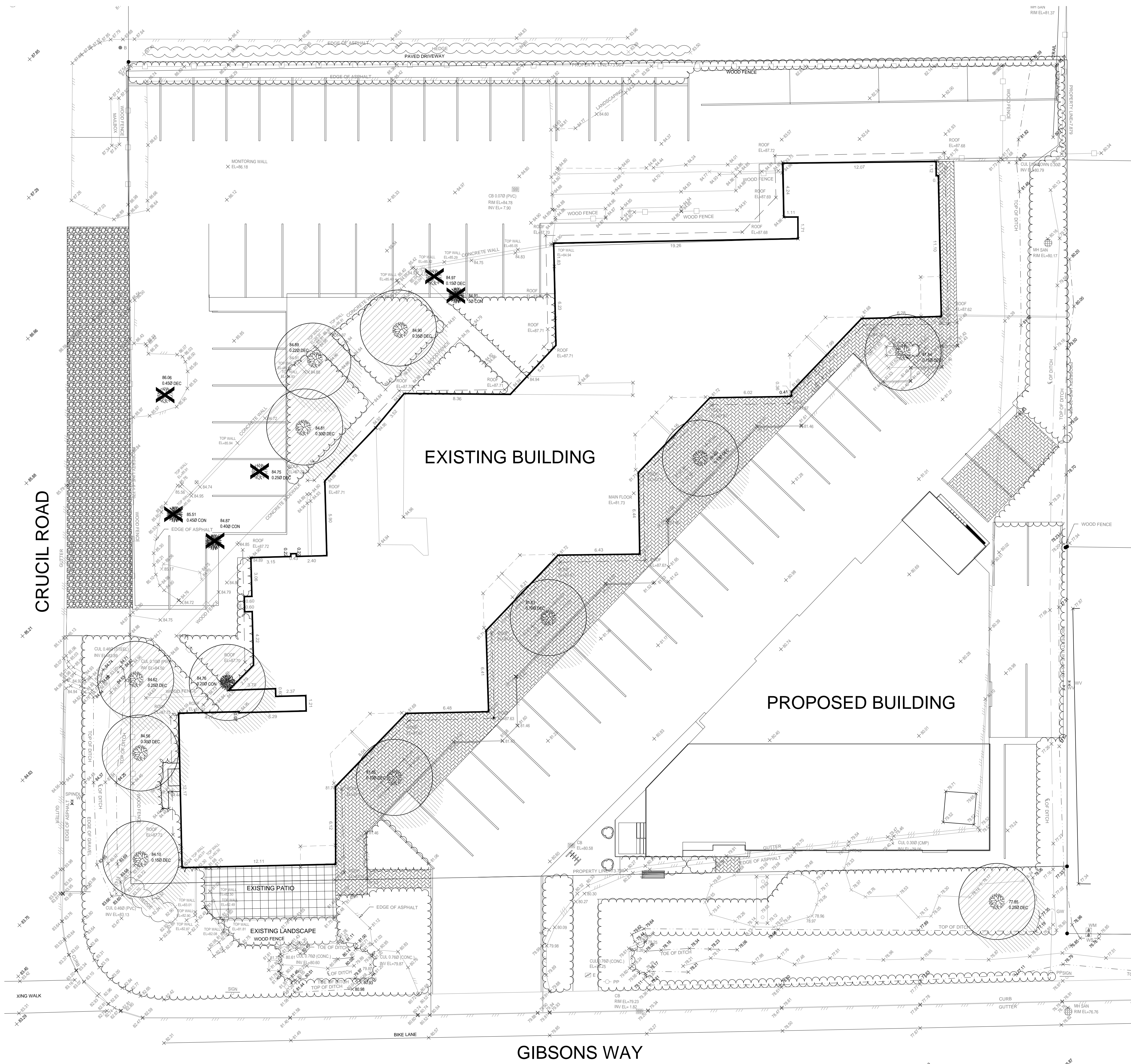
**682 GIBSONS WAY
GIBSONS, BC**



DRAWING TITLE:
**SHRUB
PLAN**

DATE: 20.AUG.26 DRAWING NUMBER:
SCALE: 1:150
DRAWN: JR **L2**
DESIGN: JR
CHK'D: PC **OF 3**



SEAL:



 TREE TO BE RETAINED
 TREE TO BE REMOVED

NO.	DATE	REVISION DESCRIPTION	DR.
1	20.SEP.08	NEW SITE PLAN	JR

CLIENT:

PROJECT:
**MIXED USE
INFILL
DEVELOPMENT**

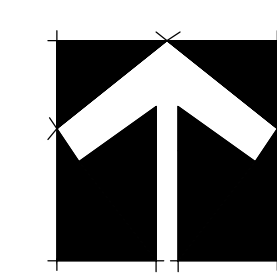
**682 GIBSONS WAY
GIBSONS, BC**

DRAWING TITLE:
**TREE MANAGEMENT
PLAN**

DATE: 20.AUG.26 DRAWING NUMBER:
SCALE: 1:150
DRAWN: JR
DESIGN: JR
CHK'D: PC

L3

OF 3



20101-2.ZIP

PMG PROJECT NUMBER:

20-101

GIBSONS WAY

CRUCIL ROAD