

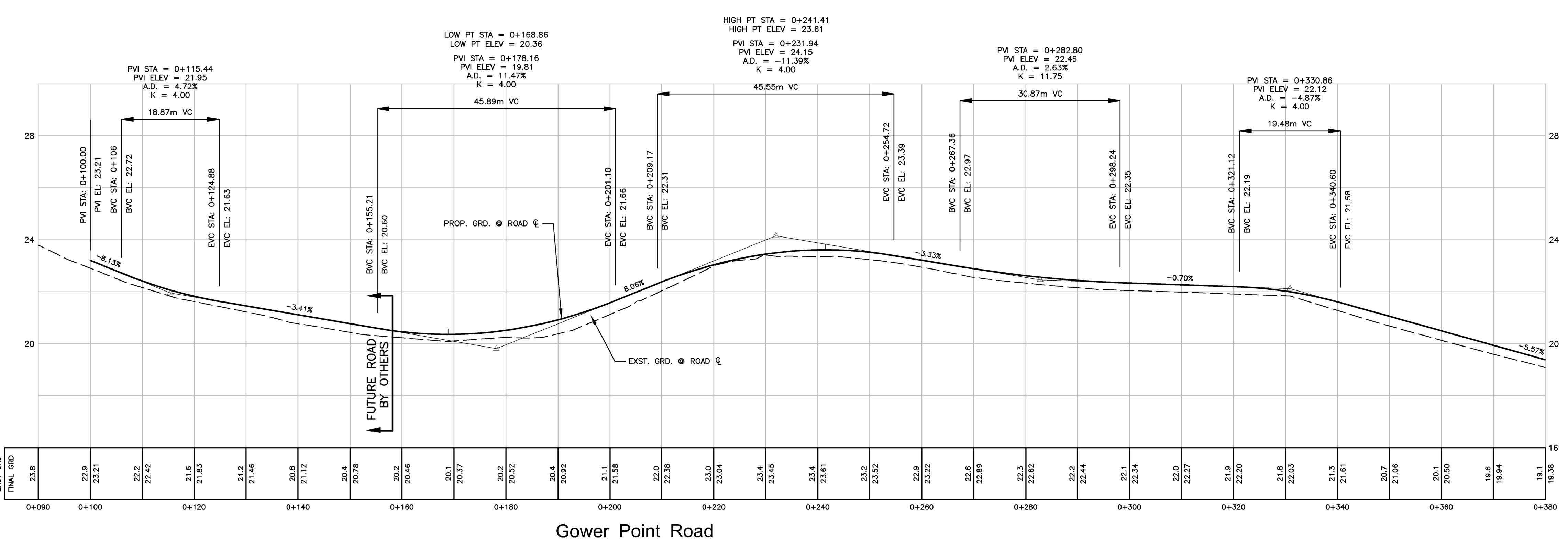
SCALE 1:8,000

| LEGEND - ROADWORKS | | |
|--------------------------|----------|----------|
| DESCRIPTION | SYMBOLS | |
| | PROPOSED | EXISTING |
| PROPERTY LINE | | |
| STAT. RIGHT-OF-WAY | | |
| ROAD-CL | | |
| EDGE OF ASPHALT | | |
| ROLLOVER CURB & GUTTER | | |
| CONCRETE BAND | | |
| ASPHALT ROAD/ PATH | | |
| FILL SLOPE | | |
| CUT SLOPE | | |
| ROCKSTACK WALL | | |
| WATERMAIN | | |
| FIRE HYDRANT | | |
| GATE VALVE | | |
| WATER SERVICE CONNECTION | | |
| SANITARY SEWER | | |
| STORM SEWER | | |
| CULVERT | | |
| CATCH BASIN (TOP INLET) | | |
| CATCH BASIN (SIDE INLET) | | |
| INFILTRATION TRENCH | | |
| SWALE | | |
| HYDRO/ TEL/ CABLE | | |
| STREETLIGHT | | |

FOR GENERAL NOTES SEE DWG KEY-4
FOR TYPICAL CROSS-SECTIONS SEE DWG TYP-4
FOR SIGNAGE & LINEPAINTING SEE DWG LP-3

ROADWORKS NOTES

- ALL MANHOLE LIDS, VALVE COVERS, CATCH BASIN RIMS AND LIDS OF ANY OTHER STRUCTURE TO BE SET AT FIRST LIFT ROAD ELEVATIONS & RAISED TO FINAL GRADE WHEN FINAL LIFT INSTALLED. SPECIFICALLY, MANHOLE LIDS MUST BE RAISED BY REMOVING FRAME, AND INSTALLING A CONCRETE SPACER, THEN REINSTATING FRAME.
- ALL SUBGRADES TO BE COMPACTED TO 95% MODIFIED PROCTOR DENSITY. SUBGRADE TO BE INSPECTED BY THE GEOTECHNICAL ENGINEER PRIOR TO PLACEMENT OF GRAVEL SUBBASE. ANY WATER SOFTENED SUBGRADE SOIL SHALL BE OVER EXCAVATED AND THE GRADE RESTORED WITH GRANULAR SOILS COMPACTED TO 95% MODIFIED PROCTOR DENSITY. ALL STRUCTURAL FILLS TO BE CONSTRUCTED TO THE REQUIREMENTS AND UNDER THE SUPERVISION OF THE GEOTECHNICAL ENGINEER. SUBBASE AND BASE MATERIALS SHALL BE PROPERLY PLACED & COMPACTED TO A MINIMUM OF 95% OF MODIFIED PROCTOR DRY DENSITY (ASTM D1557).
- ALL LOOSE AND ORGANIC MATERIAL TO BE EXCAVATED FROM ROADWAY, AND DISPOSED OF OFF SITE OR ON FILL SLOPES IF DIRECTED BY THE GEOTECHNICAL ENGINEER.
- CHANGES IN GRADE TO BE FORMED WITH SMOOTH CURVES.
- TI-E-IN TO EXISTING ASPHALT WITH VERTICAL DIAMOND SAW CUTS. 100mm OF PAVEMENT IS TO BE PLACED IN TWO LIFTS. THE FIRST OF 50mm. THE SECOND OF 50mm ASPHALT OVERLAY TO BE PLACED FOLLOWING COMPLETION OF DWELLINGS ON 100% OF THE LOTS, OR A CHEQUE IN LIEU MAY BE GIVEN TO THE TOWN OF GIBSONS (100)
- PAVING CAN ONLY PROCEED IN THE PRESENCE OF BOTH TOG'S STAFF AND GEOTECHNICAL ENGINEER'S INSPECTORS. SAMPLES OF THE ASPHALT MIX MUST BE TAKEN AND TESTED BY AN INDEPENDENT ASPHALT TESTING LABORATORY. TEST RESULTS AND REPORTS ON THE MIX WILL BE PREPARED IN ACCORDANCE WITH THE MASTER MUNICIPAL SPECIFICATIONS. CONTRACTOR TO ORGANIZE AND PAY FOR TESTING AND REPORT PREPARATION.
- THE CONTRACTOR WILL ROUGHLY GRADE THE BOULEVARDS TO THE PROFILE SHOWN ON THE CROSS SECTIONS AT THE SAME TIME AS ROAD GRADING.
- CONTRACTOR TO ARRANGE AND PAY FOR ROAD BASE, ASPHALT, AND CONCRETE TESTING PERFORMED IN ACCORDANCE WITH THE TOG'S CONSTRUCTION SPECIFICATIONS AND THE MASTER MUNICIPAL CONTRACT DOCUMENTS (MMCD).



TRAFFIC CALMING WORKSHEETS FOR DISCUSSION PURPOSES
GOWER POINT ROAD, GOSPEL ROCK
MAY 5, 2021

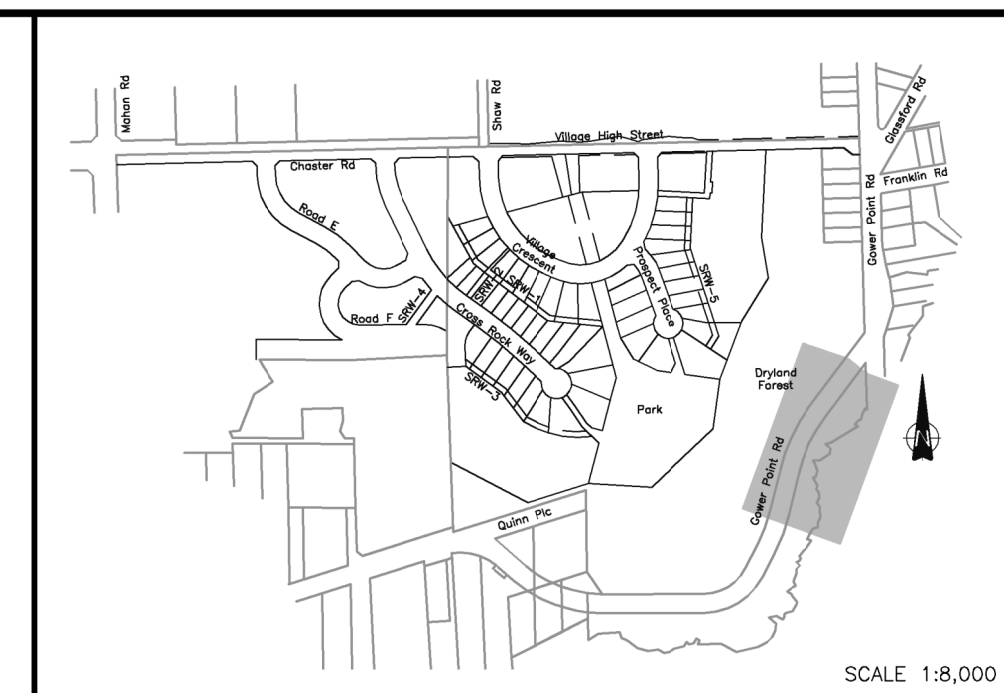
| | | | | | | |
|----|-----------|-----------------------------------|-------|----|------|----------|
| 3 | MAY 05.21 | FOR DISCUSSION PURPOSES | MJF | | | |
| 2 | MAR.08.19 | DETAILED DESIGN - 100% SUBMISSION | HKG | | | |
| 1 | AUG.31.18 | DETAILED DESIGN - 60% SUBMISSION | FBB | | | |
| no | date | revision | chk'd | no | date | revision |

client
GREENLANE HOMES LTD.
project
**GOSPEL ROCK VILLAGE
GIBSONS, BRITISH COLUMBIA**
PROFESSIONAL ENGINEERS
WEBSTER ENGINEERING LTD
LAND DEVELOPMENT CONSULTANTS
3745 DELBROOK AVENUE, NORTH VANCOUVER, B.C. V7N 3Z4 983-0458

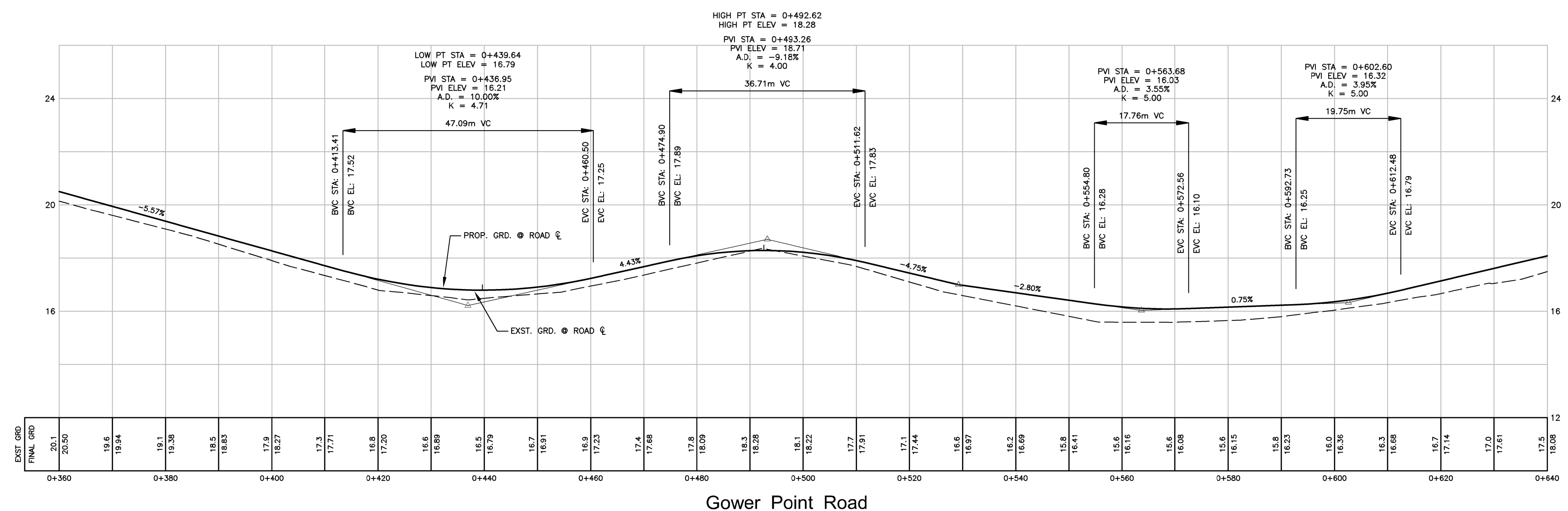
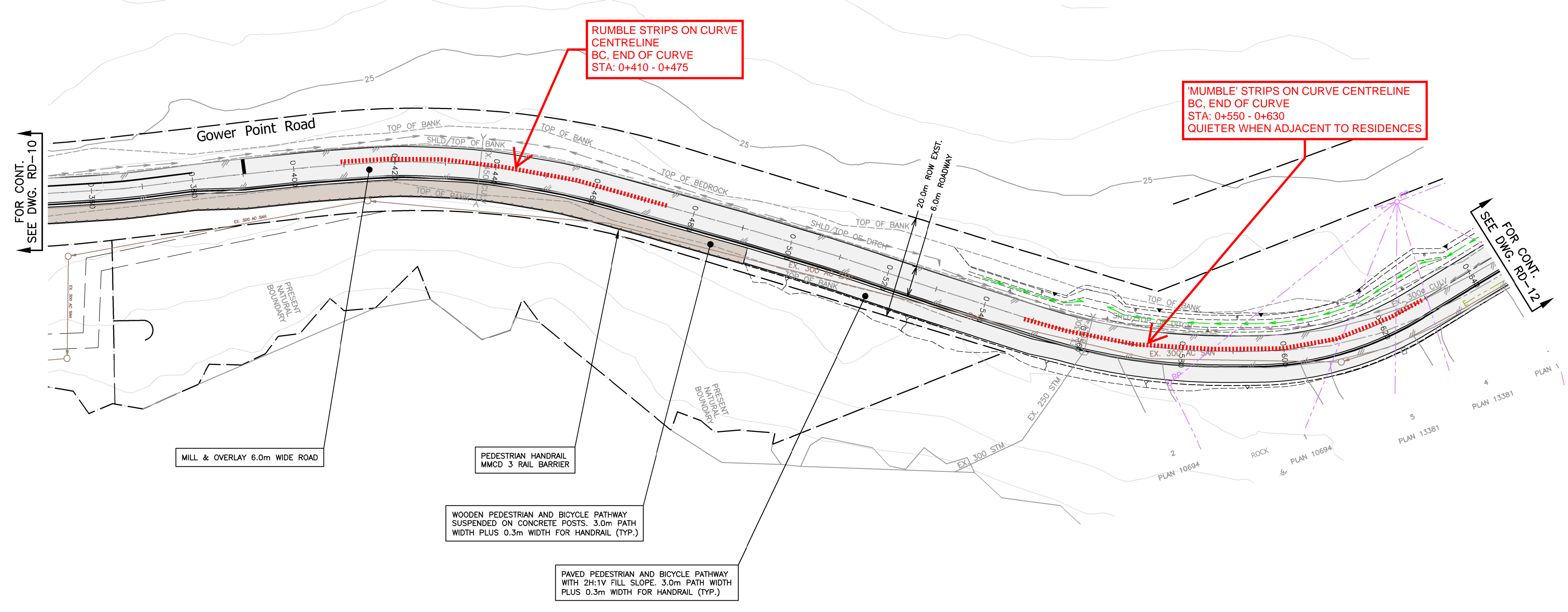
COPYRIGHT RESERVED
THIS DRAWING AND DESIGN ARE AND AT ALL TIMES REMAIN THE EXCLUSIVE PROPERTY OF WEBSTER ENGINEERING LTD AND CANNOT BE USED, REPRODUCED OR DISTRIBUTED WITHOUT WRITTEN CONSENT © 2018 WEBSTER ENGINEERING LTD.
approved
designed by **H.K.G.**
drawn by **M.J.F.**
checked by **J.A.T.**
date **AUG.31.18**

scale
hor: 1:500 vert: 1:100
file no. **3715-GPR**
drawing no. **RD-10** rev. **3**
ROADWORKS
GOWER POINT ROAD (0+100 - 0+380)

P:\37012715 Gospel Rock Village\3-Detailed - Offsite\GOWER POINT RD\ROADWORKS-GOWER POINT ROAD.dwg, 5/20/21, 4:51:46 PM, MJF



FOR GENERAL NOTES SEE DWG KEY-4
 FOR TYPICAL CROSS-SECTIONS SEE DWG TYP-4
 FOR ROADWORKS NOTES & LEGEND SEE DWG RD-10
 FOR SIGNAGE & LINEPAINTING SEE DWG LP-3

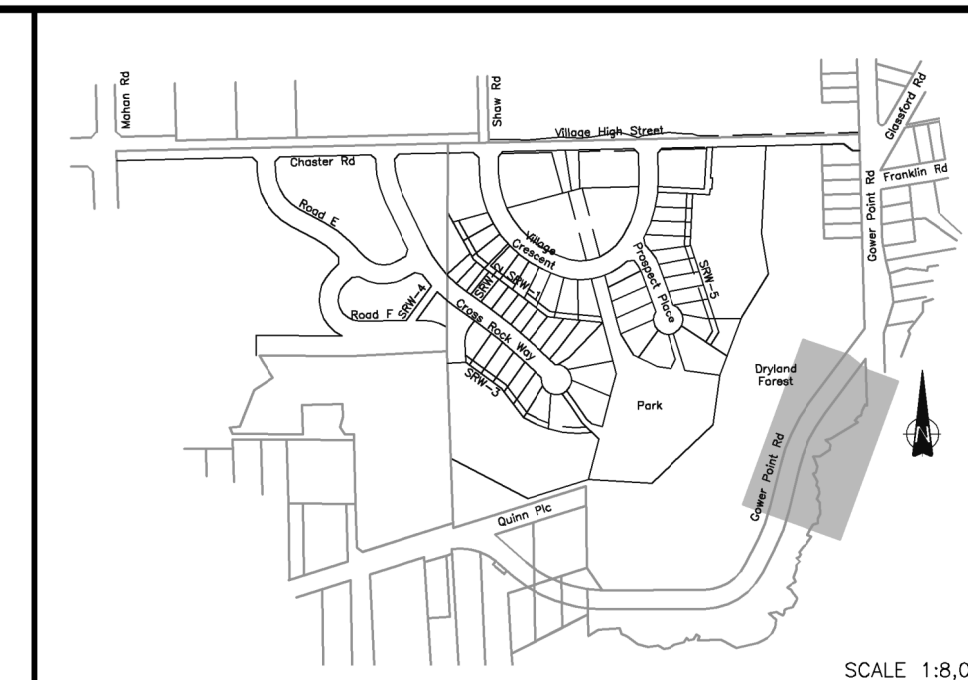


Gower Point Road

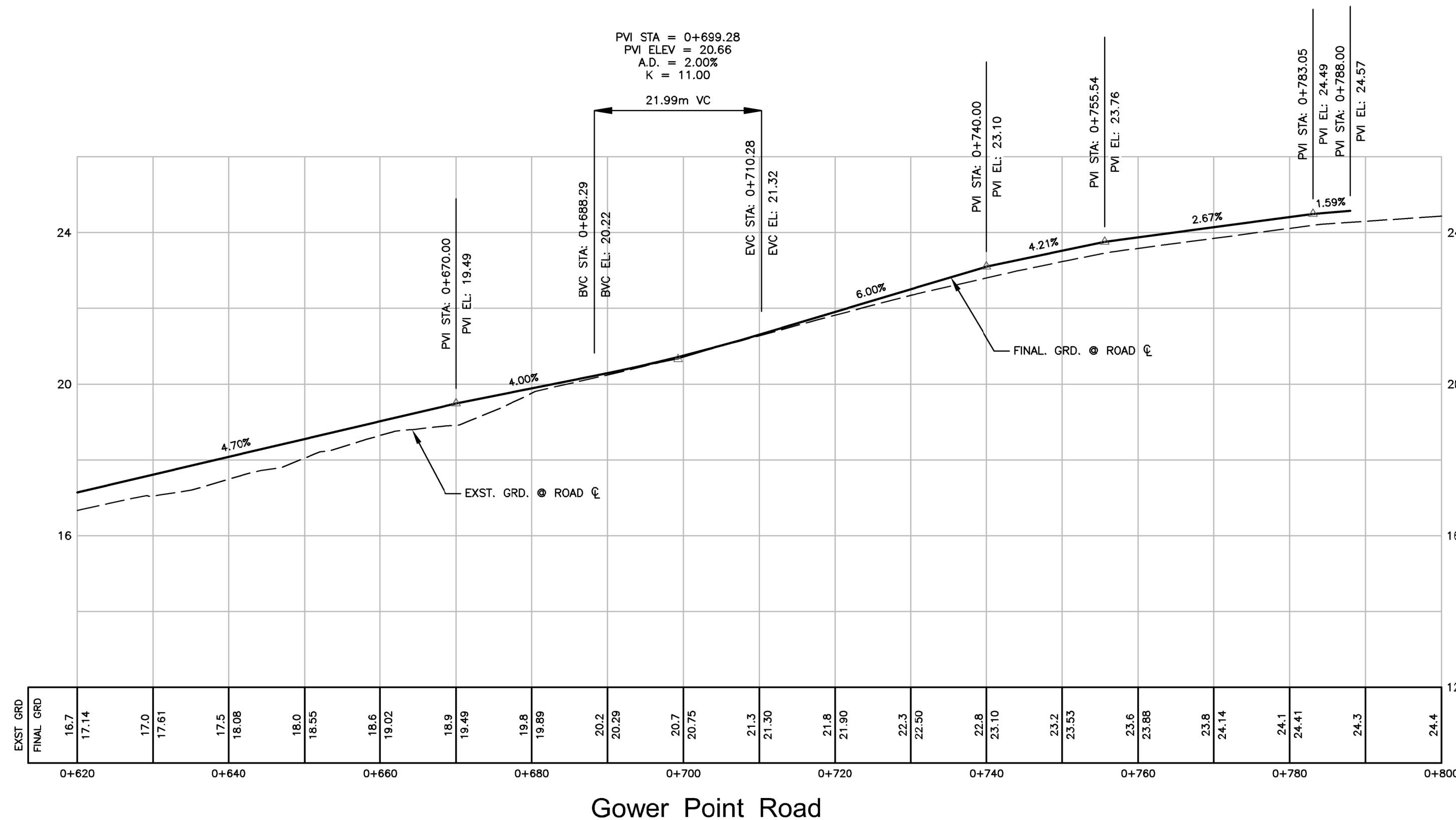
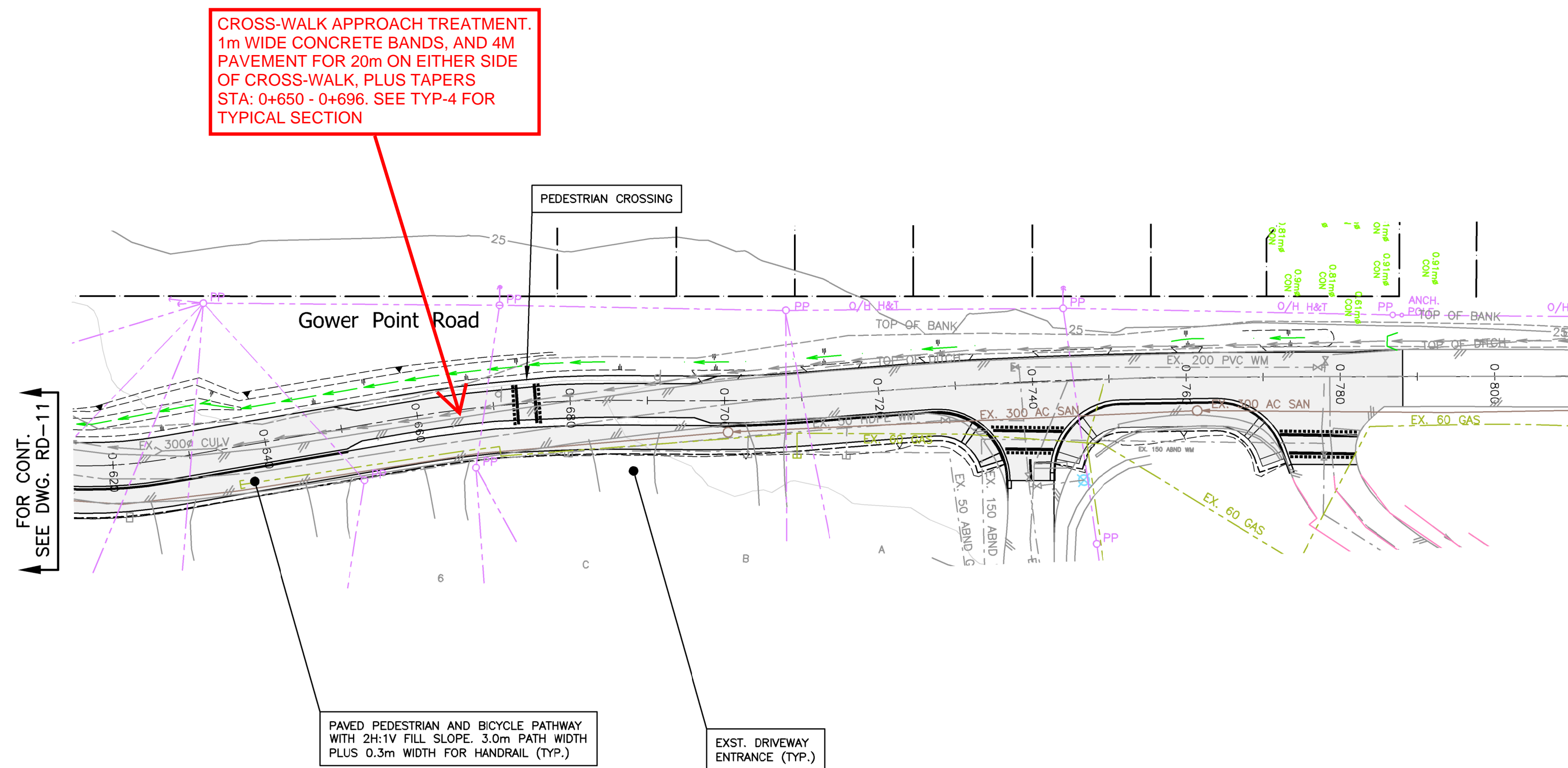
TRAFFIC CALMING WORKSHEETS
 FOR DISCUSSION PURPOSES
 GOWER POINT ROAD, GOSPEL ROCK
 MAY 5, 2021

| | | | | | | | | | |
|---------------------------------------------------|--|---------------------------------------|---------------------------------------------------------------------|---------------------------------------------------------------------------------------------------------------------------------------------------------------------------------------------|-------------------------------------------------------------------------------------------------------------------------------------------------------------------------------------------------------------------------------------|-------------------|-----------------------------------------------|-----------------------------|----------------------------------|
| 3 MAY 05.21 FOR DISCUSSION PURPOSES MJF | | client GREENLANE HOMES LTD. | project GOSPEL ROCK VILLAGE GIBSONS, BRITISH COLUMBIA | WEBSTER ENGINEERING LTD STEEP ROCKY TERRAIN SPECIALISTS PROFESSIONAL ENGINEERS 3745 DELBROOK AVENUE, NORTH VANCOUVER, B.C. V7N 3Z4 983-0458 LAND DEVELOPMENT CONSULTANTS | COPYRIGHT RESERVED THIS DRAWING AND DESIGN ARE, AND AT ALL TIMES REMAIN THE EXCLUSIVE PROPERTY OF WEBSTER ENGINEERING LTD. AND CANNOT BE USED, REPRODUCED OR DISTRIBUTED WITHOUT WRITTEN CONSENT © 2018 WEBSTER ENGINEERING LTD. | approved | designed by H.K.G. | title | scales hor: 1:500 vert: 1:100 |
| 2 MAR 08.19 DETAILED DESIGN - 100% SUBMISSION HKG | | | | | | checked by J.A.T. | ROADWORKS GOWER POINT ROAD (0+360 - 0+640) | file no. 3715-GPR | |
| 1 AUG 31.18 DETAILED DESIGN - 60% SUBMISSION PBB | | | | | | date AUG 31.18 | drawing no. RD-11 | rev. 3 | |

F:\3700\3715 Gospel Rock Village\6-DETAILED - OFFSITE GOWER POINT RD\ROADWORKS-GOWER POINT ROAD.dwg, 5/20/2021 5:38:53 PM, MJF



FOR GENERAL NOTES SEE DWG KEY-4
 FOR TYPICAL CROSS-SECTIONS SEE DWG TYP-4
 FOR ROADWORKS NOTES & LEGEND SEE DWG RD-10
 FOR SIGNAGE & LINEPAINTING SEE DWG LP-3

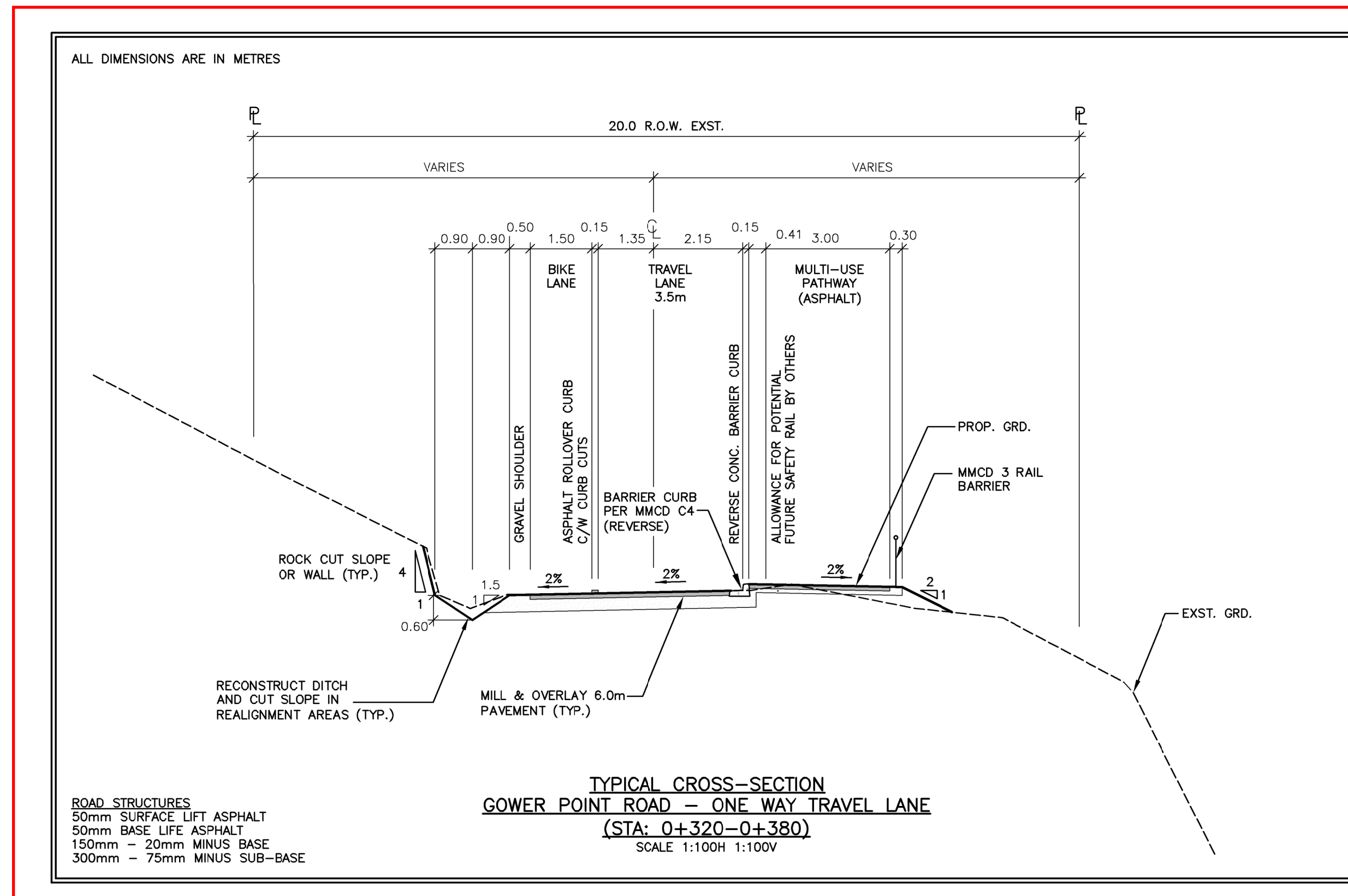


TRAFFIC CALMING WORKSHEETS
 FOR DISCUSSION PURPOSES
 GOWER POINT ROAD, GOSPEL ROCK
 MAY 5, 2021

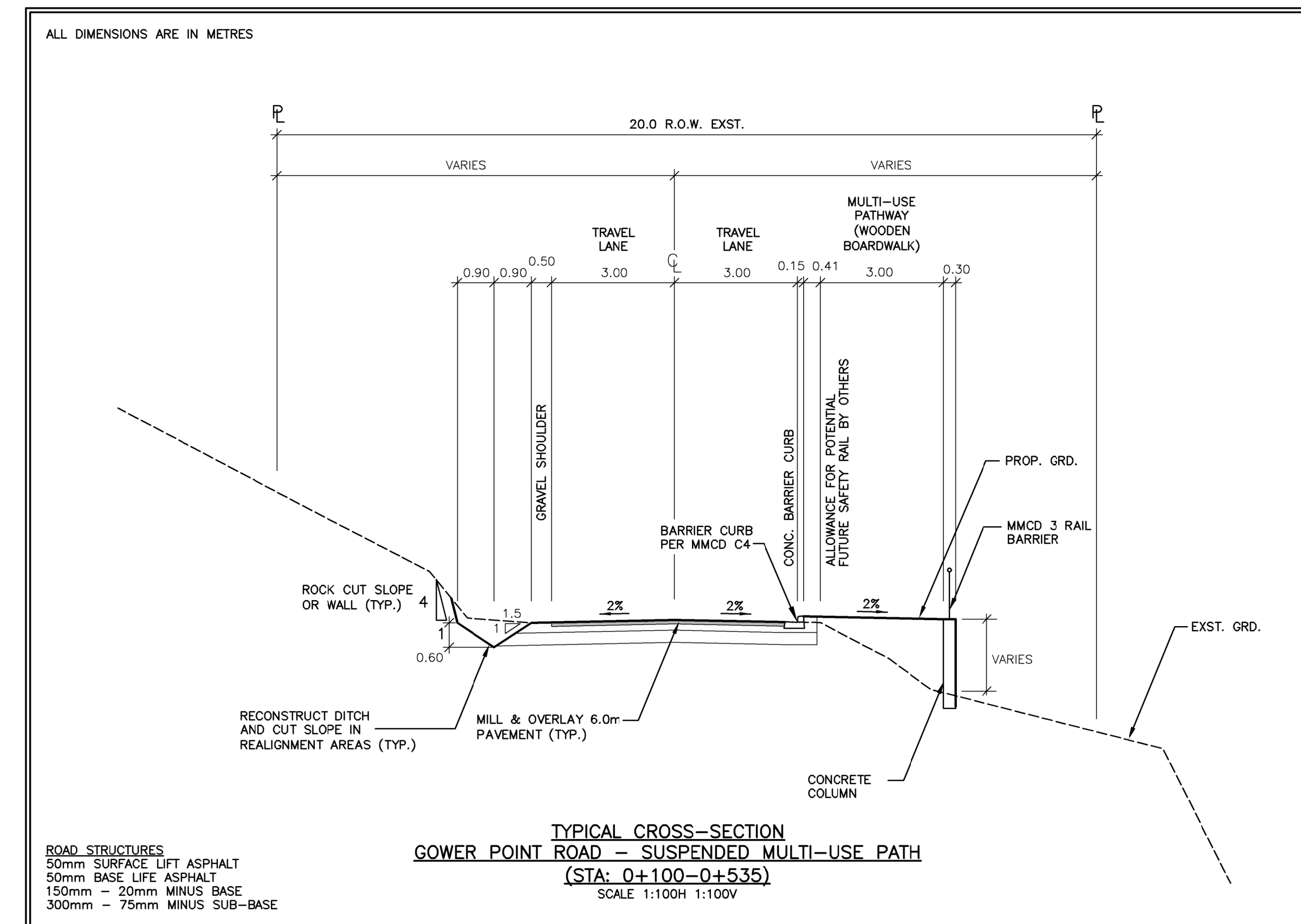
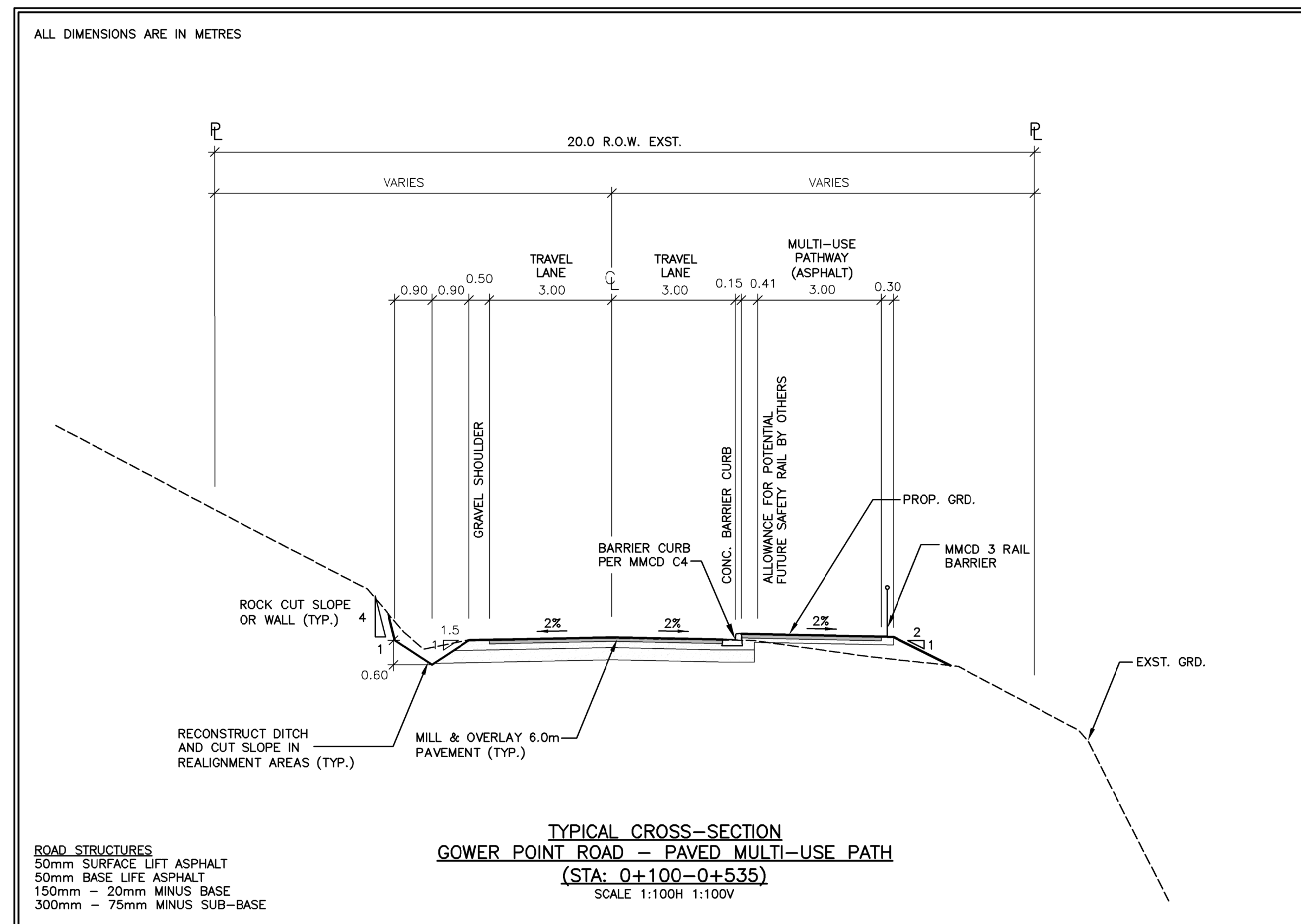
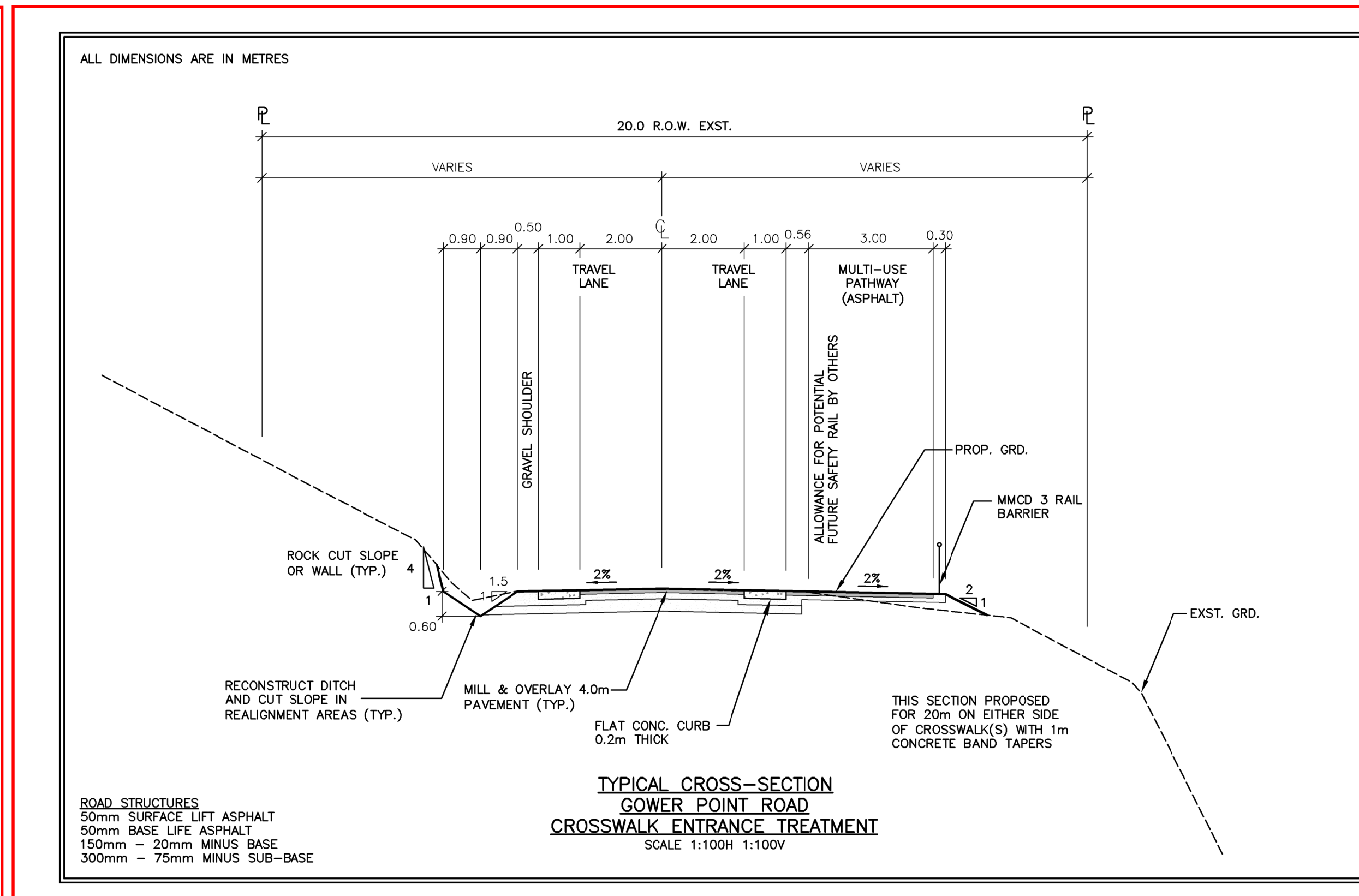
| | | | | | | | | | | | | | | | |
|-----|------|-----------|-----------------------------------|-----|---------|----------|--------------------------------------------------|--|-------------------------------------------------------------------------------------------------------------------------------------------------------------------------------------------------|-------------------------------------------------------------------------------------------------------------------------------------------------------------------------------------------------------------------------------------|-----------------------------------------------------------------|-----------------------------------------------|--------|-------|-----------------------------------------------------------------------------------------------|
| 3 | | MAY 05.21 | FOR DISCUSSION PURPOSES | MJF | client | | GREENLANE HOMES LTD. | | STEEP ROCKY TERRAIN SPECIALISTS WEBSTER ENGINEERING LTD PROFESSIONAL ENGINEERS 3745 DELBROOK AVENUE, NORTH VANCOUVER, B.C. V7N 3Z4 983-0458 LAND DEVELOPMENT CONSULTANTS | COPYRIGHT RESERVED THIS DRAWING AND DESIGN ARE, AND AT ALL TIMES REMAIN THE EXCLUSIVE PROPERTY OF WEBSTER ENGINEERING LTD. AND CANNOT BE USED, REPRODUCED OR DISTRIBUTED WITHOUT WRITTEN CONSENT © 2018 WEBSTER ENGINEERING LTD. | approved | designed by | H.K.G. | title | scales hor: 1:500 vert: 1:100 file no. 3715-GPR drawing no. RD-12 rev. 3 |
| 2 | | MAR 08.19 | DETAILED DESIGN - 100% SUBMISSION | HKG | project | | GOSPEL ROCK VILLAGE GIBSONS, BRITISH COLUMBIA | | | | drawn by M.J.F. checked by J.A.T. date AUG 31.18 | ROADWORKS GOWER POINT ROAD (0+620 - 0+800) | | | |
| 1 | | AUG 31.18 | DETAILED DESIGN - 60% SUBMISSION | PBB | | | | | | | | | | | |
| no. | date | revision | ch'kd | no. | date | revision | ch'kd | | | | | | | | |

F:\37012715 Gospel Rock Village\6-DETAILED - OFFSITE GOWER POINT RD\ROADWORKS-GOWER POINT ROAD.dwg, 5/20/2021 5:43:01 PM, MJF

TYPICAL CROSS-SECTION
GOWER POINT ROAD - ONE LANE
(STA: 0+320 - 0+380)



TYPICAL CROSS-SECTION
GOWER POINT ROAD - CROSS-WALK TREATMENT



TRAFFIC CALMING WORKSHEETS
FOR DISCUSSION PURPOSES
GOWER POINT ROAD, GOSPEL ROCK
MAY 5, 2021

| no. | date | revision | chk'd | no. | date | revision | chk'd |
|-----|-----------|-----------------------------------|-------|-----|------|----------|-------|
| 2 | MAY.05.21 | FOR DISCUSSION PURPOSES | MJF | | | | |
| 1 | NOV.30.18 | DETAILED DESIGN - 100% SUBMISSION | JAT | | | | |

client
GREENLANE HOMES LTD.

project
**GOSPEL ROCK VILLAGE
GIBSONS, BRITISH COLUMBIA**

PROFESSIONAL ENGINEERS

WEBSTER ENGINEERING LTD.
LAND DEVELOPMENT CONSULTANTS

3745 DELBROOK AVENUE, NORTH VANCOUVER, B.C. V7N 3Z4 983-0458

COPYRIGHT RESERVED
THIS DRAWING AND
DESIGN ARE, AND AT ALL
TIMES REMAIN THE
EXCLUSIVE PROPERTY OF
WEBSTER ENGINEERING
LTD. AND CANNOT BE
USED, REPRODUCED OR
DISTRIBUTED WITHOUT
WRITTEN CONSENT
© 2018 WEBSTER
ENGINEERING LTD.

approved

designed by H.K.G

drawn by M.J.F.

checked by J.A.T.

date AUG.31.18

title
**TYPICAL CROSS-SECTIONS
GOWER POINT ROAD**

scales
hor: 1:100 vert: 1:100

file no.
3715-GPR

drawing no.
TYP-4

rev.
2