

TOWN OF GIBSONS

BYLAW NO. 1252-04, 2021

A Bylaw to amend *Town of Gibsons Garbage Collection and Disposal Bylaw No. 1252, 2018*;

WHEREAS the Council of the Town of Gibsons has adopted *Garbage Collection and Disposal Bylaw No. 1252, 2018*;

AND WHEREAS the Council of the Town of Gibsons deems it desirable to amend Bylaw No. 1252, 2018;

NOW THEREFORE the Council of the Town of Gibsons, in open meeting assembled, enacts as follows:

PART A – CITATION

1. This Bylaw may be cited for all purposes as “Garbage Collection and Disposal Amendment Bylaw No. 1252-04, 2021”.

PART B – AMENDMENT

2. Town of Gibsons Garbage Collection and Disposal Amendment Bylaw No. 1252, 2018 as hereby amended as follows:

- a) By altering Section 4 “Definitions” with the following:

- i. the definition for *Wildlife Resistant Enclosure* be deleted and replaced with the following:

WILDLIFE RESISTANT ENCLOSURE	means a structure which has four enclosed sides, a roof, doors, and a latching device of sufficient design and strength to prevent access by dangerous wildlife, and for clarity, includes a garage, shed, or other structure that is inaccessible to wildlife and that is designed and constructed in accordance with the specifications set out in Schedule C
---	---

- ii. the definition for *Commercial Refuse Container* be added:

COMMERCIAL REFUSE CONTAINER	means a metal receptacle that is designed or intended to dispose of waste by automated means and is wildlife proof
--	--

- b) By deleting Section 5.2.1 and replacing with the following:

5.2.1 Provide and maintain in good and sufficient order and repair:

- 5.2.1.1 a Commercial Refuse Container that meets the criteria established in Schedule B; or

5.2.1.2 a container enclosed within a Wildlife Resistant Enclosure that is designed and constructed in accordance with the criteria established in Schedule C.

- c) By deleting Section 5.2.3;
- d) By adding Schedule B – Commercial Refuse Container, attached to and forming part of this bylaw;
- e) By adding Schedule C – Solid Waste Wildlife Resistant Enclosure, attached to and forming part of this bylaw; and
- f) Making such consequential alterations and annotations as are required to give effect to this amending bylaw, including renumbering of the Bylaw.

PART C – ADOPTION

READ A FIRST TIME this	20 th	DAY OF APRIL,	2021
READ A SECOND TIME this	####	DAY OF MONTH ,	202x
READ A THIRD TIME this	####	DAY OF MONTH ,	202x
ADOPTED this	####	DAY OF MONTH ,	202x

William Beamish, Mayor

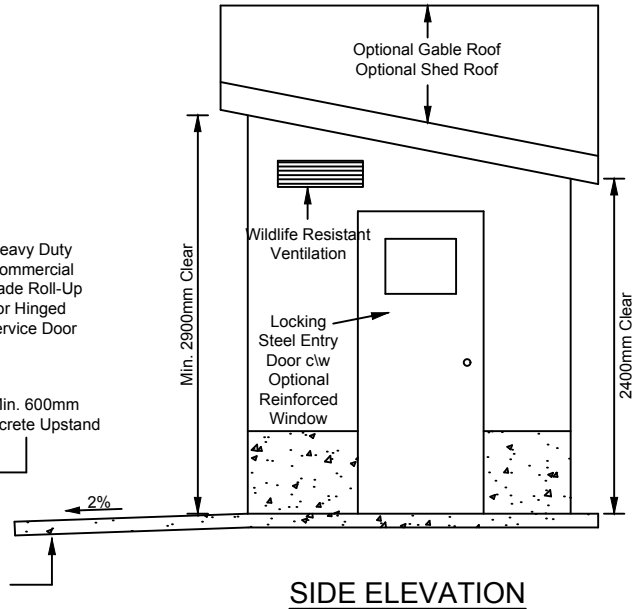
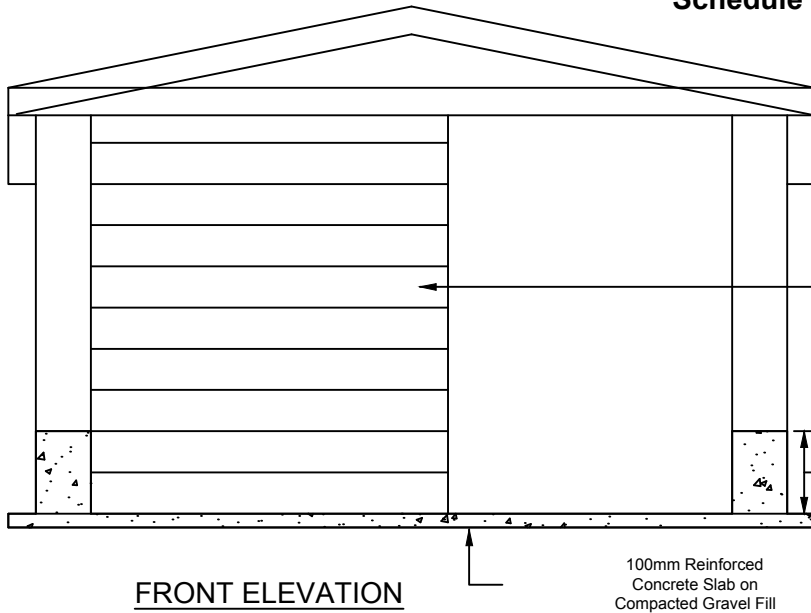
Rebecca Anderson, Corporate Officer

Schedule B
Commercial Refuse Container

The following criteria applies to a commercial refuse container:

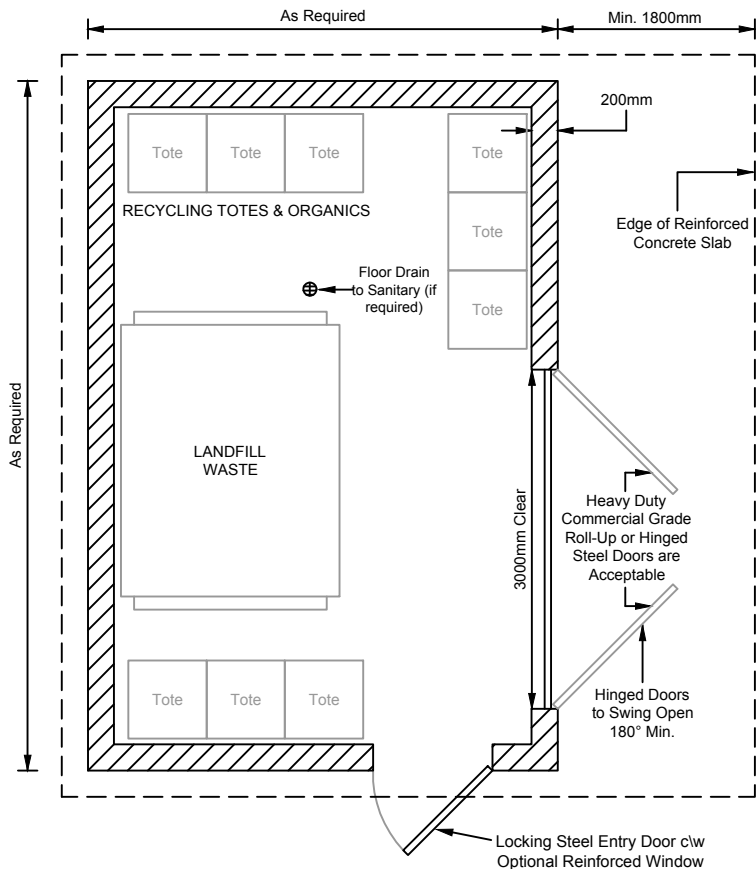
1. The lid or lids, and any man doors, must close tightly to prevent access by Wildlife and/or Dangerous Wildlife.
2. The lid or lids, and any man doors, must be:
 - a) self-closing; or
 - b) self-latching; or
 - c) capable of being completely closed and secured with a latching device.
3. The latches for the lid or lids and bag removal must be such that an adult bear using its claws will be unlikely to reach the latch trigger mechanism.
4. Hinges and latches for lids must be sufficiently strong, and sufficiently affixed to the container, that they cannot be pried open by an adult bear using its claws. As a guideline, a lid that can be dismantled using a crowbar is not sufficient.
5. The container must be sufficiently stable or capable of being so anchored as to prevent tipping by a bear.
6. Container material must be of sufficient strength to prevent Wildlife and/or Dangerous Wildlife from chewing, battering or crushing the container.

Schedule C



NOTES:

1. Enclosure architecture (materials, etc) is to conform to Municipal Building and Development Permit requirements (as required).
2. Design concept only. Alternative designs meeting the intent of these requirements are invited.
3. Structures are to be constructed in accordance with the BC Building Code. Enclosures are to be designed to withstand snow loading, vehicular damage, operational damage, and bears.
4. Roofs should be designed to avoid snow shed in front of service and entry doors.
5. Service door(s) are to have dual locking mechanisms. Hinged doors require a heavy-duty cane bolt at the bottom and a slide bolt at the top of the stationary door. Roll-up doors require slide bolt locking mechanisms on the bottom of the door, each side. All locking mechanisms to be located on the interior; no hardware should be located on the service door(s) exterior.
6. Steel entry door is to be 36" wide (915mm) and be equipped with a self-closing mechanism. Door may have a covered keyed knob guard on the exterior for access and panic hardware on interior for egress. Alternatively a push button lock with a turning knob is acceptable.
7. Adequate motion activated interior and exterior lighting is to be provided (if required).
8. Bear proof vent and steel entry door window openings should be sized such that a bear could not gain access in the case of breakage.
9. Units in mm unless otherwise noted.
10. Roll-up doors are preferable in areas that may have ice and snow build up but hinged doors are acceptable.
11. Separate enclosures for Commercial & Residential uses on the same property are strongly recommended.



Dimensions shown serve as a guideline only, the ultimate size and configuration of the garbage enclosure will be dependant on the owners preference and services being provided.



Thank you to RMOw for the copy of the original design drawings

TOWN OF GIBSONS

SOLID WASTE WILDLIFE-PROOF ENCLOSURE

DRAWN BY: BL

DATE: JULY 2017

SCALE: N.T.S.

DWG. NO.: G11