

OCEANMOUNT - WELL 6 PUMPHOUSE

What's changed?

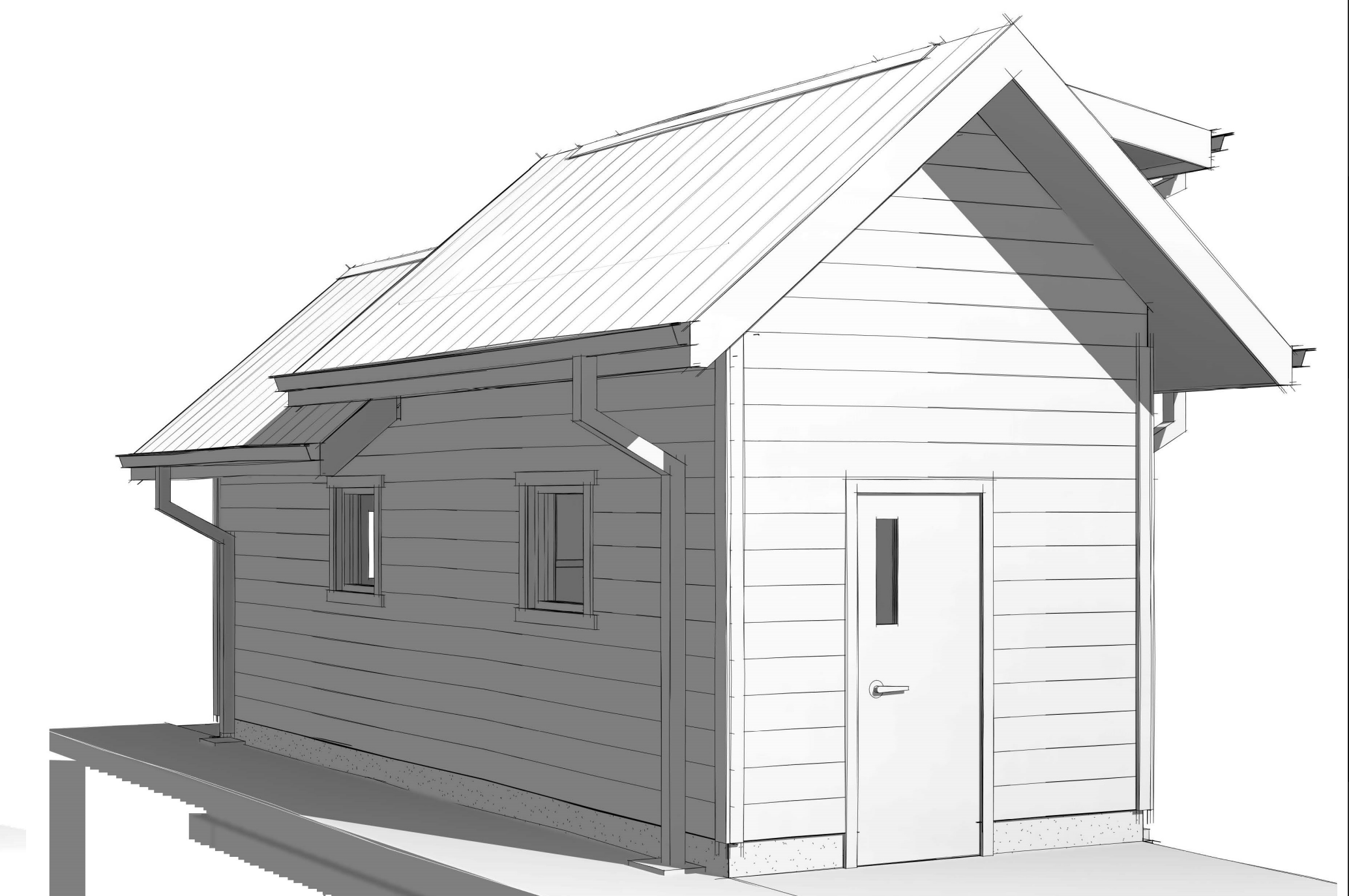
- *Roof has been split over the pump room and the electrical room*
- *A dormer has been added to reduce the height of the electrical room by 0.7m*
- *Pump room has been reduced from 4m to 2.7m in height at the gutter line*
- *Building has been re-designed to better match neighbourhood character*



② 3D View B



③ 3D View C



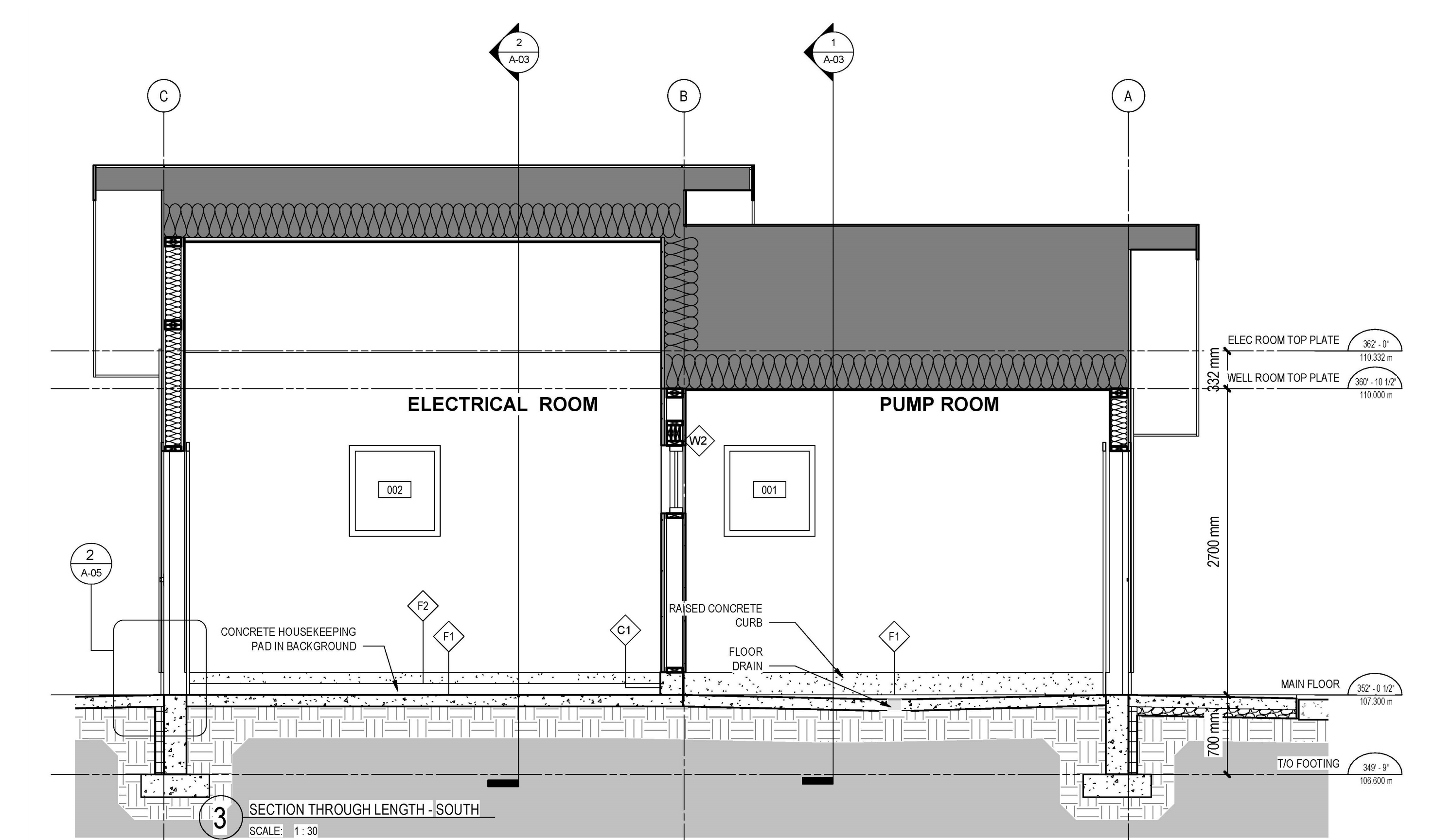
① 3D View A



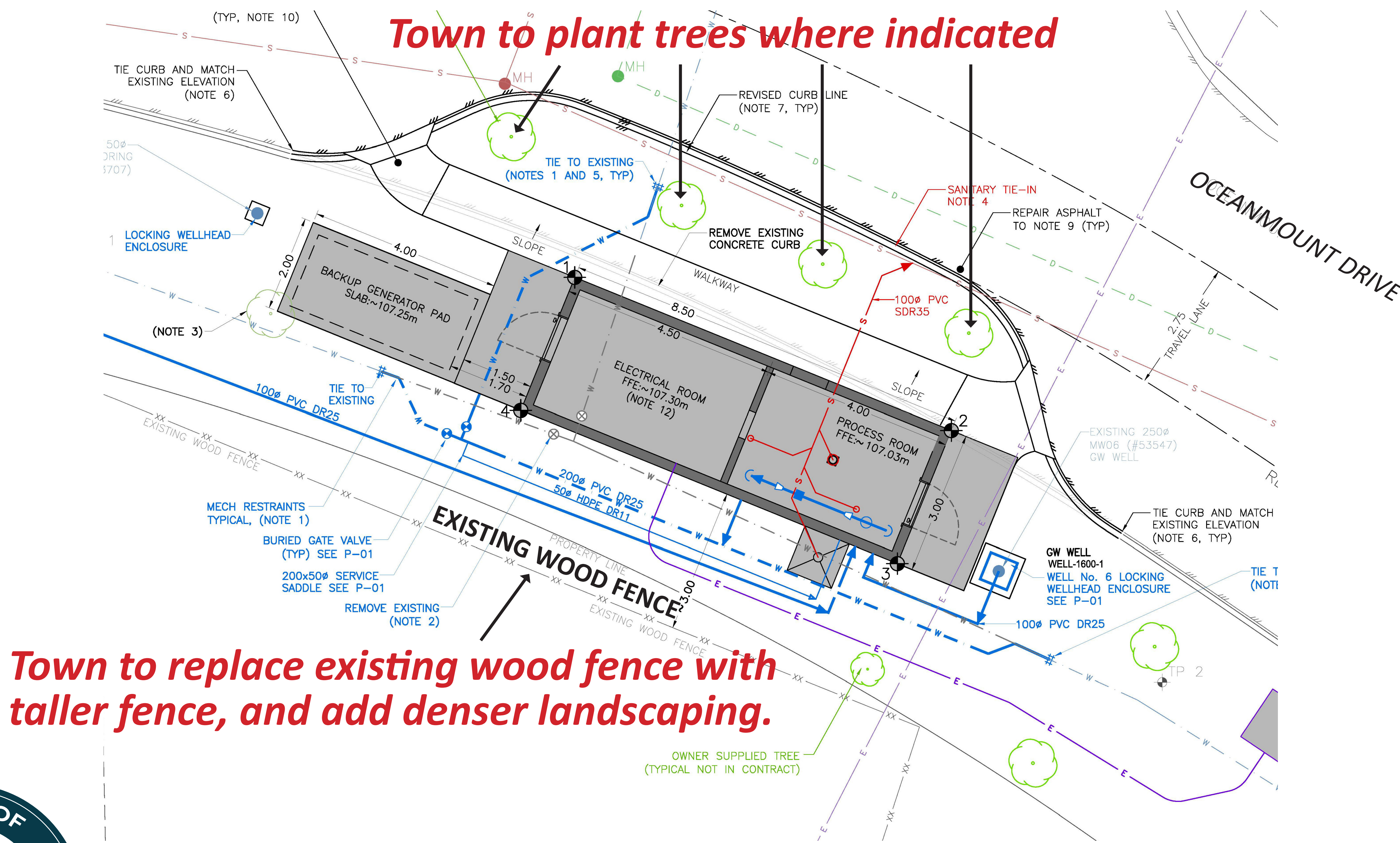
OCEANMOUNT - WELL 6 PUMPHOUSE

How will noise levels be managed?

- *Higher grade enclosure for generator reduces sound level from 112 dB to 69.8 dB*
- *Silent “Sine-Wave Filter” to be installed*
- *Steps taken to minimize use of generator*
- *No local audible alarm*



OCEANMOUNT - WELL 6 PUMPHOUSE



OCEANMOUNT - WELL 6 PUMPHOUSE

Good to know:

- *Pumphouse will not create vibrations*
- *Comprehensive preventative maintenance program reduces equipment breakdowns*
- *No chemical hazards related to water treatment process*
- *Site will be graded to improve drainage*
- *No increased traffic following construction*

