



# Town of Gibsons

## ACTIVE TRANSPORTATION IMPROVEMENTS

September 27, 2022



# LAND ACKNOWLEDGEMENT





# INTRODUCTIONS





# WELCOME & AGENDA



- **Active Transportation in Gibsons**
- **Introduction to Active Transportation**
  - What is it?
  - Why is it important?
  - Facility Types
  - Traffic Calming
- **Workshop**
  - Glassford Road
  - Gower Point Road

# ZOOM HOUSEKEEPING

Rename Yourself

Audio and Video Settings

Raise a Hand

View Participants  
and Chat Window

Mute Stop Video

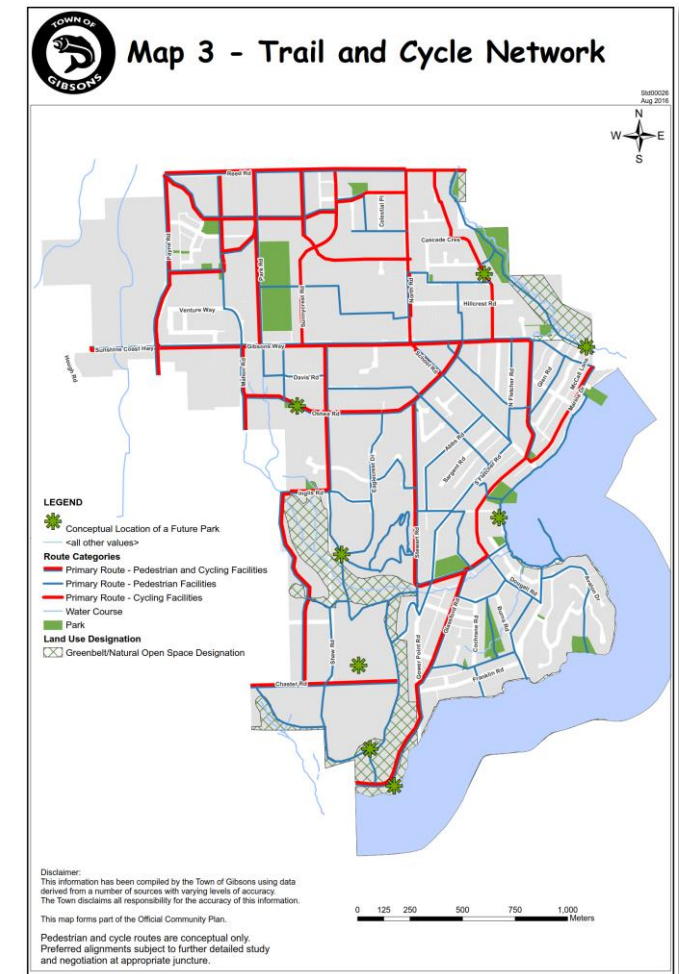
Participants Chat Share Screen Record Reactions

Leave



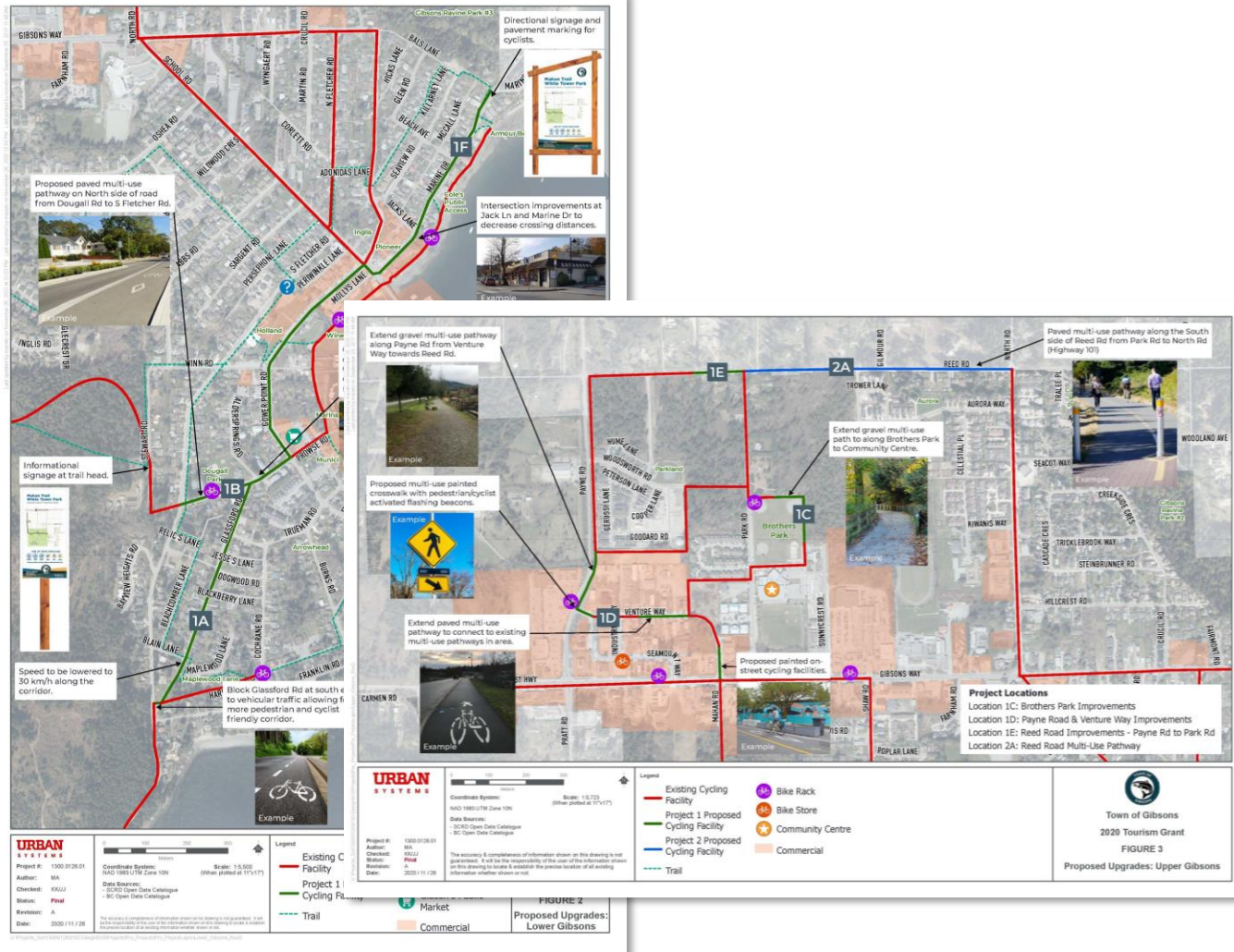
# ACTIVE TRANSPORTATION IN GIBSONS

- Committed to developing a comprehensive active transportation network
- **March 2021** - Town received a grant to be used to complete safe, continuous active transportation links in Lower Gibsons and Upper Gibsons
- **2021** – Completed the Gibsons connector project
  - Installed a downhill bike lane between School Road and North Fletcher Road
  - Modified North Fletcher Road
- **2022-2023** – Grant application to develop an Active Transportation Network Plan





# CURRENT PROJECTS



- Marine Drive
- Payne Road and Venture Way
- Reed Road
- Glassford Road
- Gower Point Road



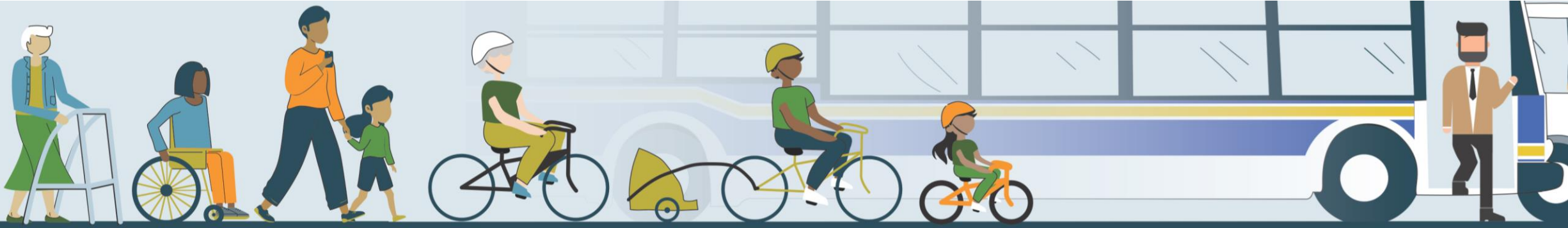
# ACTIVE TRANSPORTATION





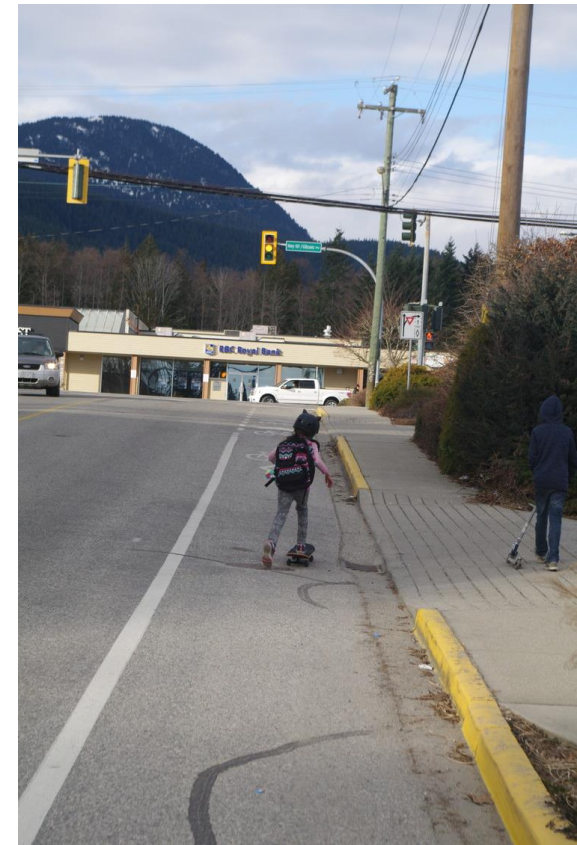
# WHAT IS ACTIVE TRANSPORTATION?

- Active Transportation is any method of **human powered** transportation.
- Active transportation includes:
  - Walking
  - Jogging
  - Rolling using a wheelchair or mobility scooter
  - Cycling
  - Rollerblading
  - Scootering
  - Skateboarding and longboarding
  - Water modes (canoeing, kayaking, paddle boarding)



# BENEFITS OF ACTIVE TRANSPORTATION

- Encouraging and providing more opportunities to travel actively plays an important part in enhancing our community's health, environment, and economy.
- Benefits of active transportation:
  - Improves focus
  - Physical health
  - Community connections
  - Environmental
  - Reduce traffic congestion and improve safety
  - Build confidence and independence in youth





# TYPES OF ACTIVE TRANSPORTATION FACILITIES

Sidewalk



Multi-Use Pathway



Trail



Enhanced Shoulder





# CYCLING FACILITIES

Shoulder Bikeway



Painted Bicycle Lane



Neighbourhood Bikeway



Protected Bicycle Lane



Multi-Use Pathway



Supporting Facilities

All Ages and Abilities (AAA) Facilities

← Less Comfortable

More Comfortable →



# TRAFFIC CALMING



- Primary Goals
  - Improve Safety
  - Preserve Neighbourhood Livability
- Objectives
  - Reducing Speed
  - Reducing Volume
- Guiding Principles
  - Local or Collector Roads
  - Preserve reasonable access
  - Not a universal solution



# TRAFFIC CALMING TREATMENTS

## VERTICAL DEFLECTIONS



## HORIZONTAL DEFLECTIONS & NARROWING



## PAVEMENT MARKINGS AND TREATMENTS



## ACCESS RESTRICTIONS





# TRAFFIC CALMING TREATMENTS

## VERTICAL DEFLECTIONS



Speed Humps/Cushions



Raised Crosswalks

## HORIZONTAL DEFLECTIONS & NARROWING



Curb Extensions



Traffic Circles



Lane Narrowing

## PAVEMENT MARKINGS AND TREATMENTS



Pavement Markings

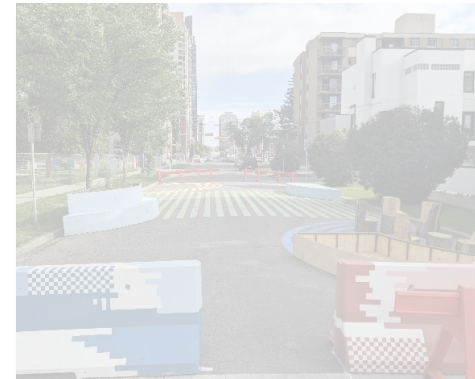


Painted Crosswalks



Textured Surfaces

## ACCESS RESTRICTIONS



Full/Directional Closures



Raised Medians



# TRAFFIC CALMING TREATMENTS

## VERTICAL DEFLECTIONS



Speed Humps/Cushions



Raised Crosswalks

## HORIZONTAL DEFLECTIONS & NARROWING



Curb Extensions



Traffic Circles



Lane Narrowing

## PAVEMENT MARKINGS AND TREATMENTS



Pavement Markings

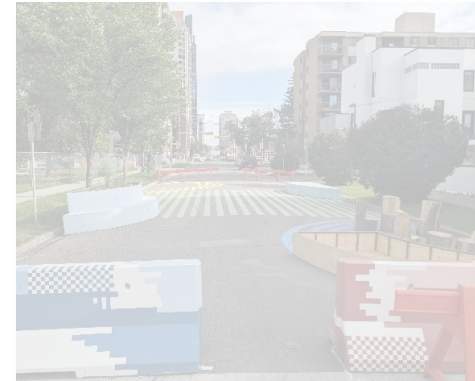


Painted Crosswalks



Textured Surfaces

## ACCESS RESTRICTIONS



Full/Directional Closures



Raised Medians



# TRAFFIC CALMING TREATMENTS

## VERTICAL DEFLECTIONS



Speed Humps/Cushions



Raised Crosswalks

## HORIZONTAL DEFLECTIONS & NARROWING



Curb Extensions



Traffic Circles



Lane Narrowing

## PAVEMENT MARKINGS AND TREATMENTS



Pavement Markings

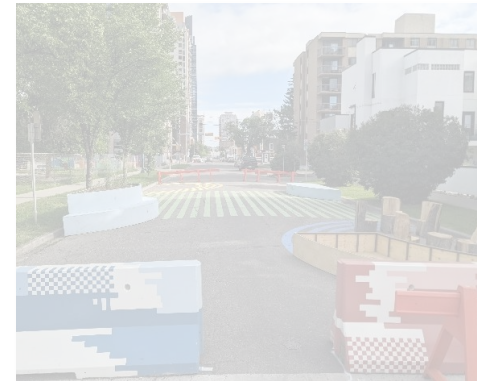


Painted Crosswalks



Textured Surfaces

## ACCESS RESTRICTIONS



Full/Directional Closures



Raised Medians



# TRAFFIC CALMING TREATMENTS

## VERTICAL DEFLECTIONS



Speed Humps/Cushions



Raised Crosswalks



Curb Extensions



Traffic Circles



Lane Narrowing

## PAVEMENT MARKINGS AND TREATMENTS



Pavement Markings

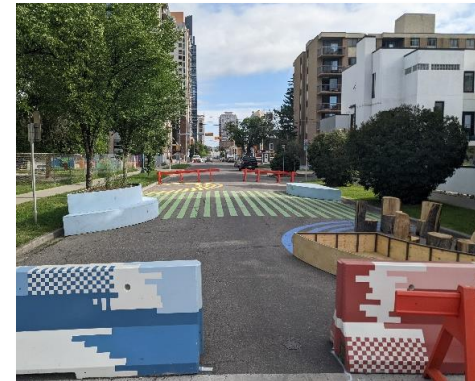


Painted Crosswalks



Textured Surfaces

## ACCESS RESTRICTIONS



Full/Directional Closures



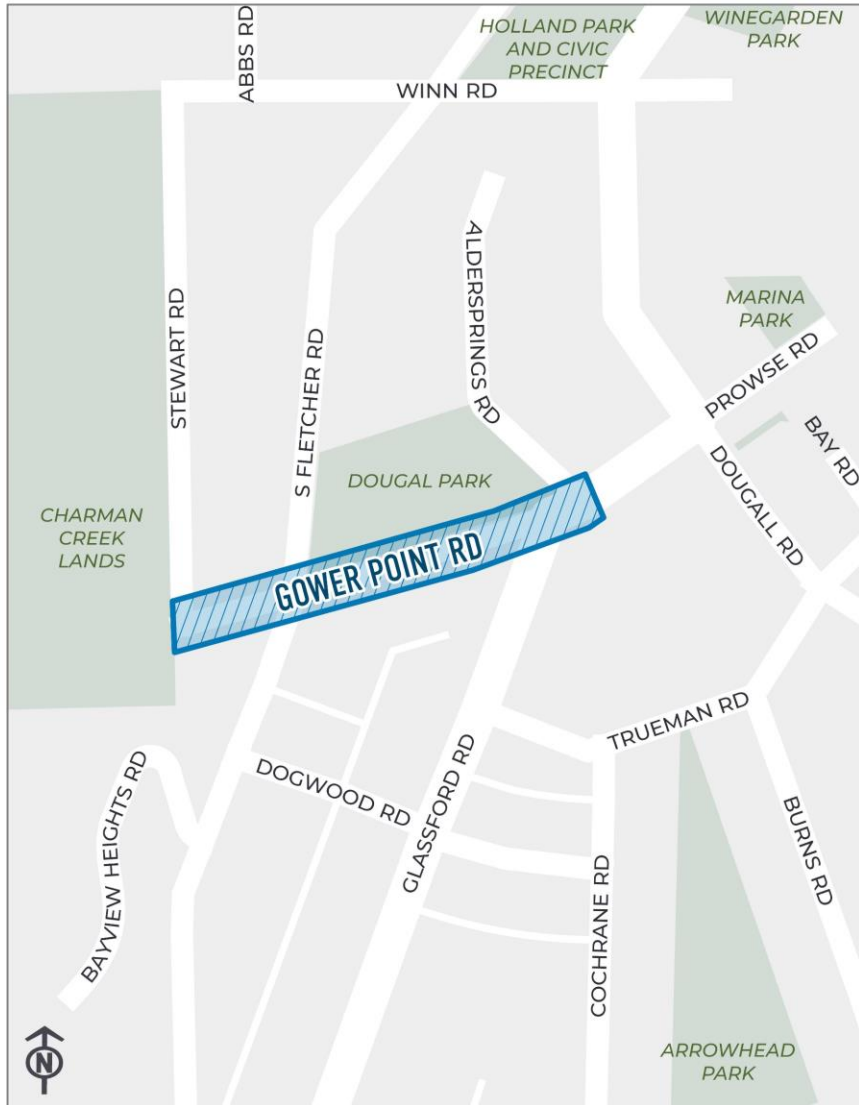
Raised Medians



# COMMUNITY WORKSHOP



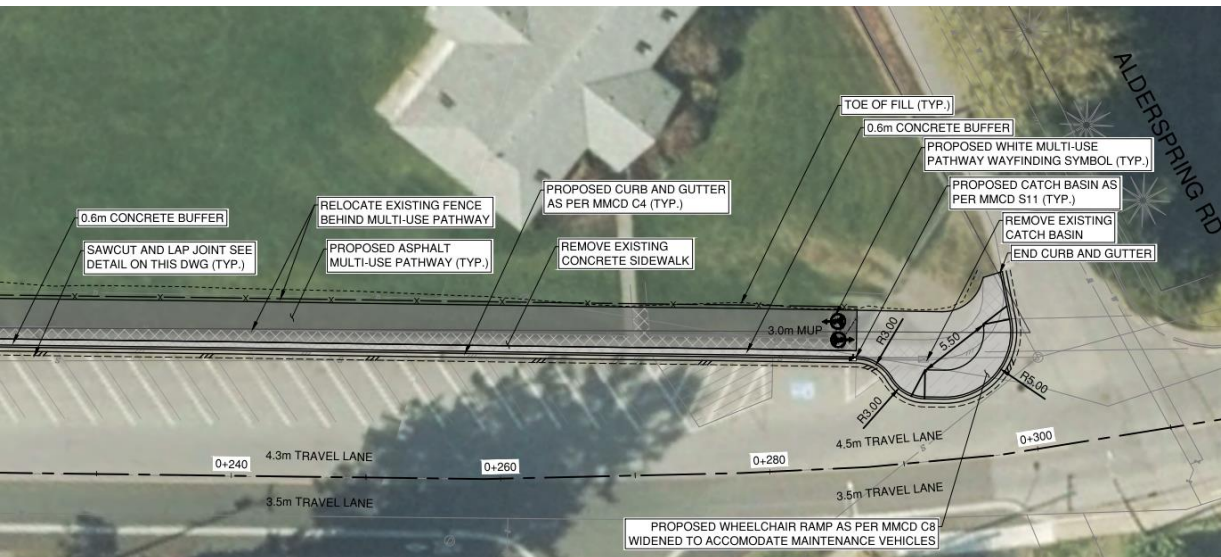
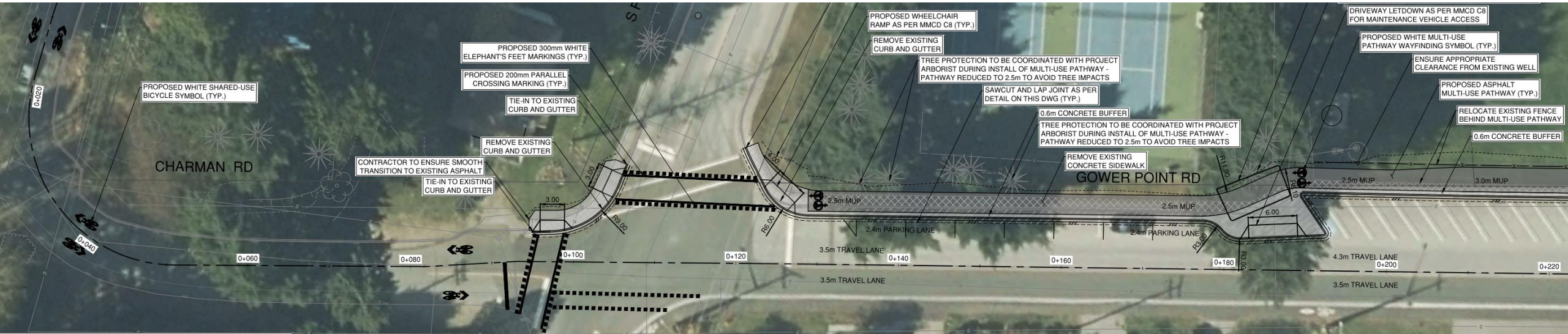
# GOWER POINT ROAD



- **Collector** road designation
- Key connection for lower Gibsons
- Relatively centralized in the neighbourhood
- Fronting Dougal Park
- As an AT connection, leads to Inglis Trails in Charman Creek Lands (off-street paths)

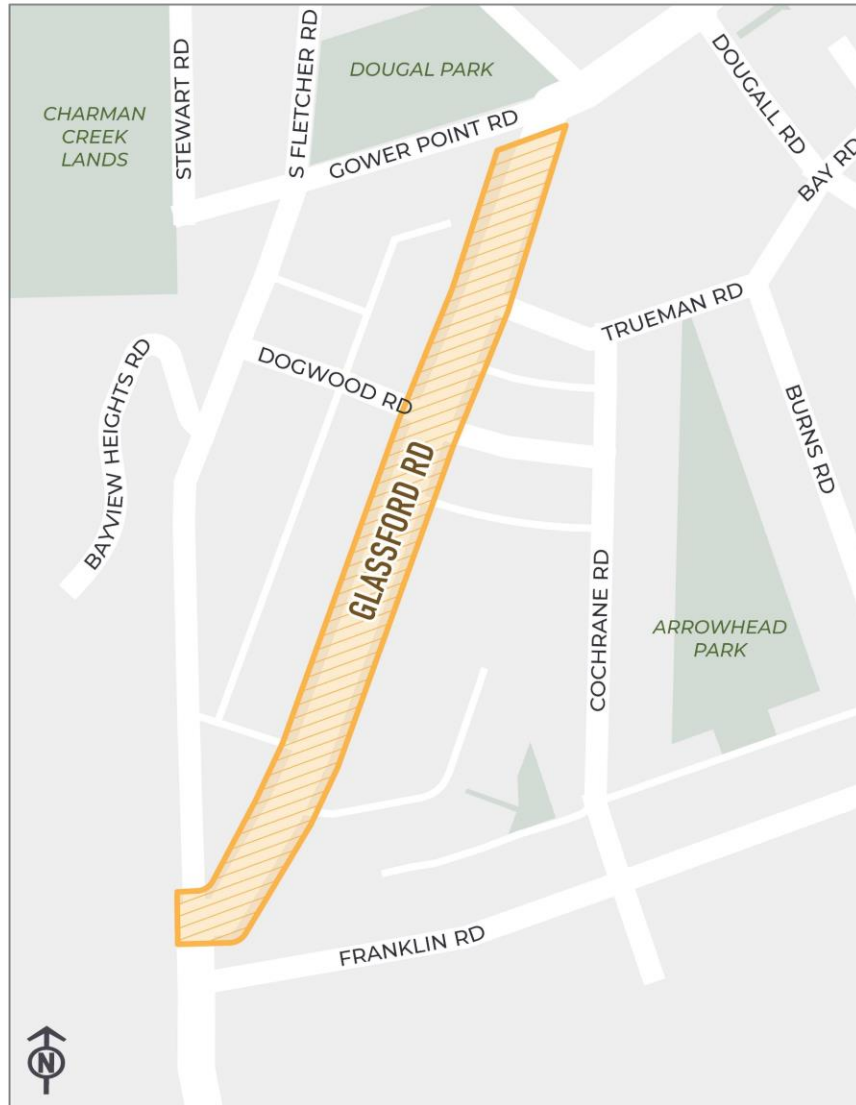


# GOWER POINT ROAD



- 2.5m – 3.0m wide Multi-use Path
- Improved crossings at S Fletcher Rd
- Maintain existing parking availability
- Shared-use markings on Charman Rd

# GLASSFORD ROAD



- **Local** road designation
- Wide pavement width for two lanes, absence of sidewalks or curbs.
- Fronting a daycare and nursery, and home to families with small children



# GLASSFORD ROAD



- Community engagement surveys in 2021 and early 2022
- **July 2021** – temporary trial closure introduced at south of Blaine Lane, coupled with multiple data collection
- **June 2022** – temporary closure maintained and moved to north of Blaine Lane



# WORKSHOP





# CLOSING



## NEXT STEPS

- Urban Systems will prepare a summary report of what we heard from you and Town staff will present the findings to Council to determine next steps



**THANK YOU!**