

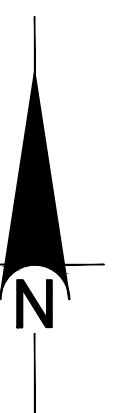


LIGHTING: ALL LIGHTING TO BE NIGHT SKY FRIENDLY AND IS TO FOLLOW DEVELOPMENT PERMIT GUIDELINES- AREA #5

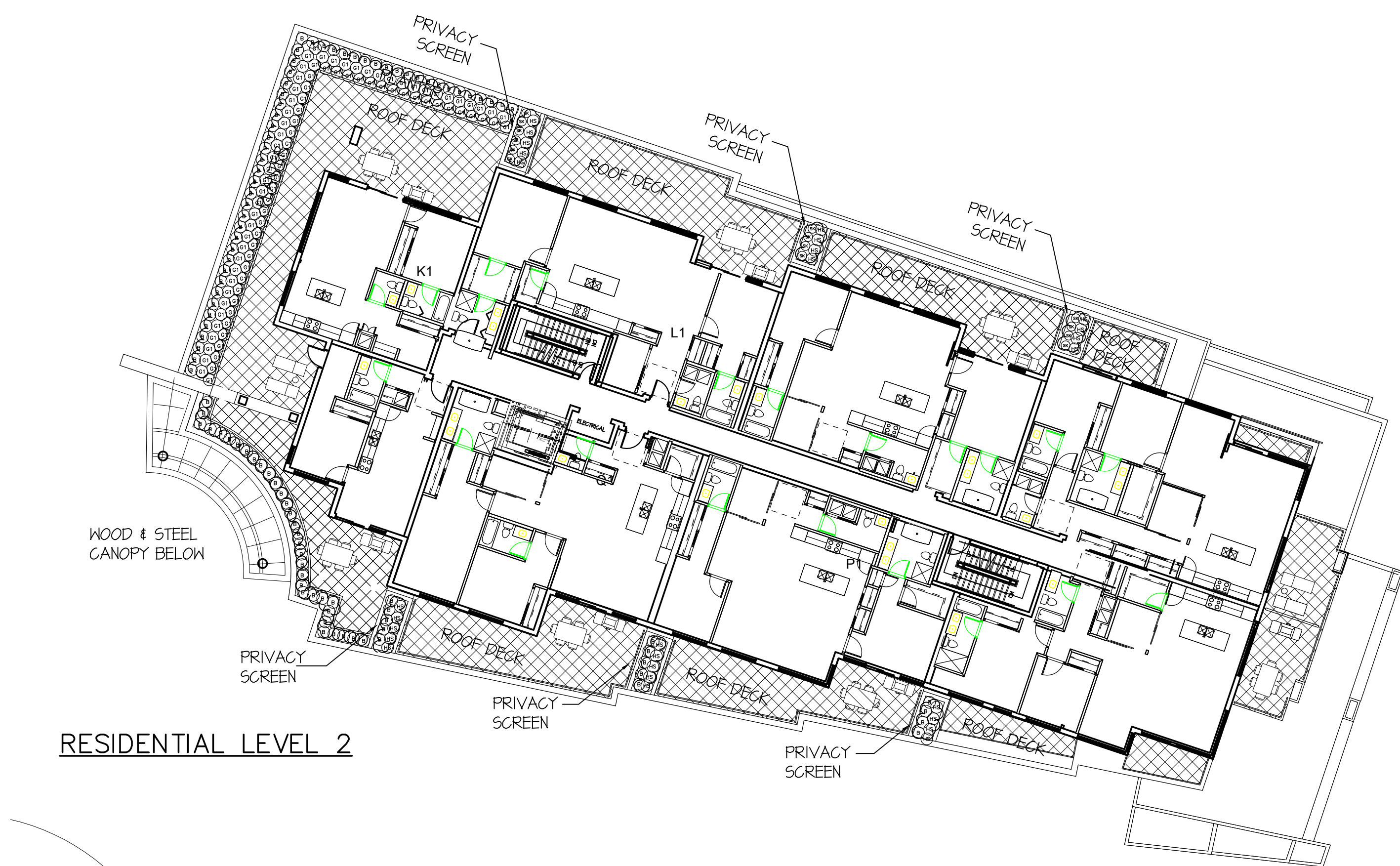
BIKE PARKING:

STREET LEVEL - 26 CLASS 2

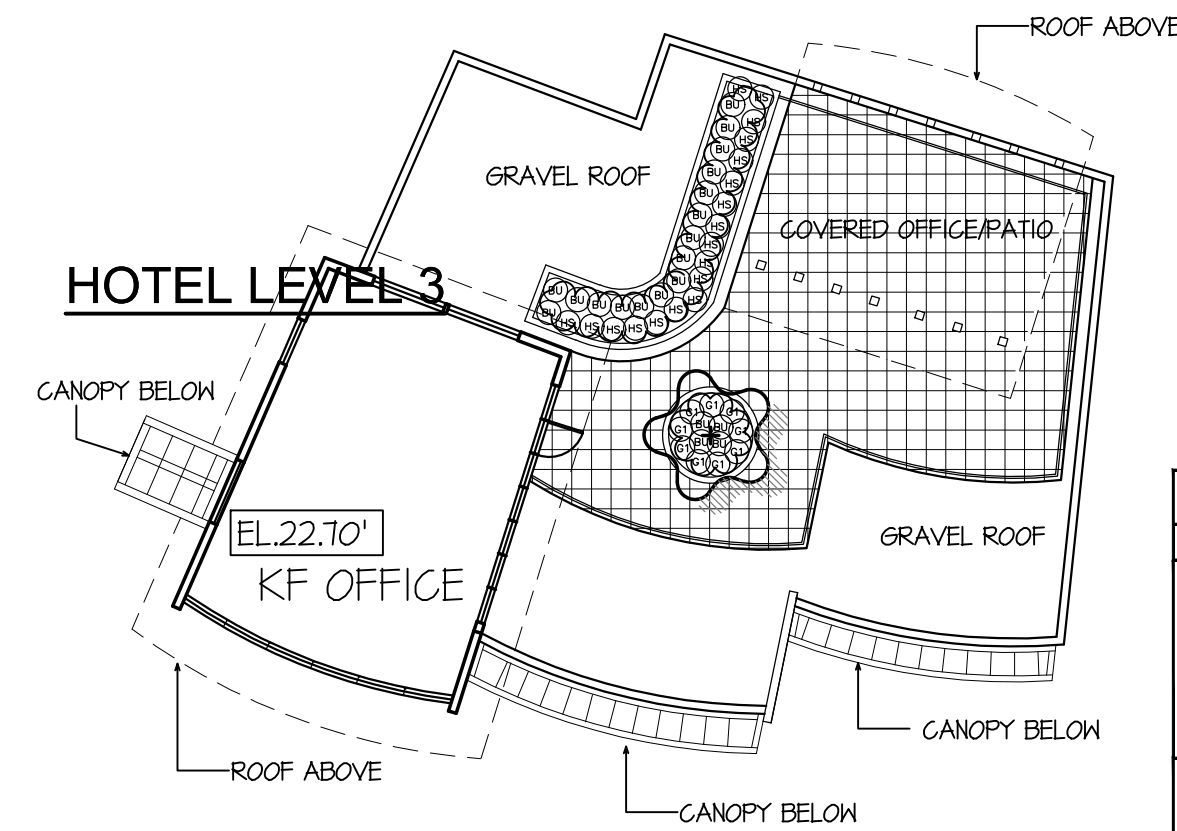
LOWER LEVEL - 16 CLASS 2



2112-1.ZIP



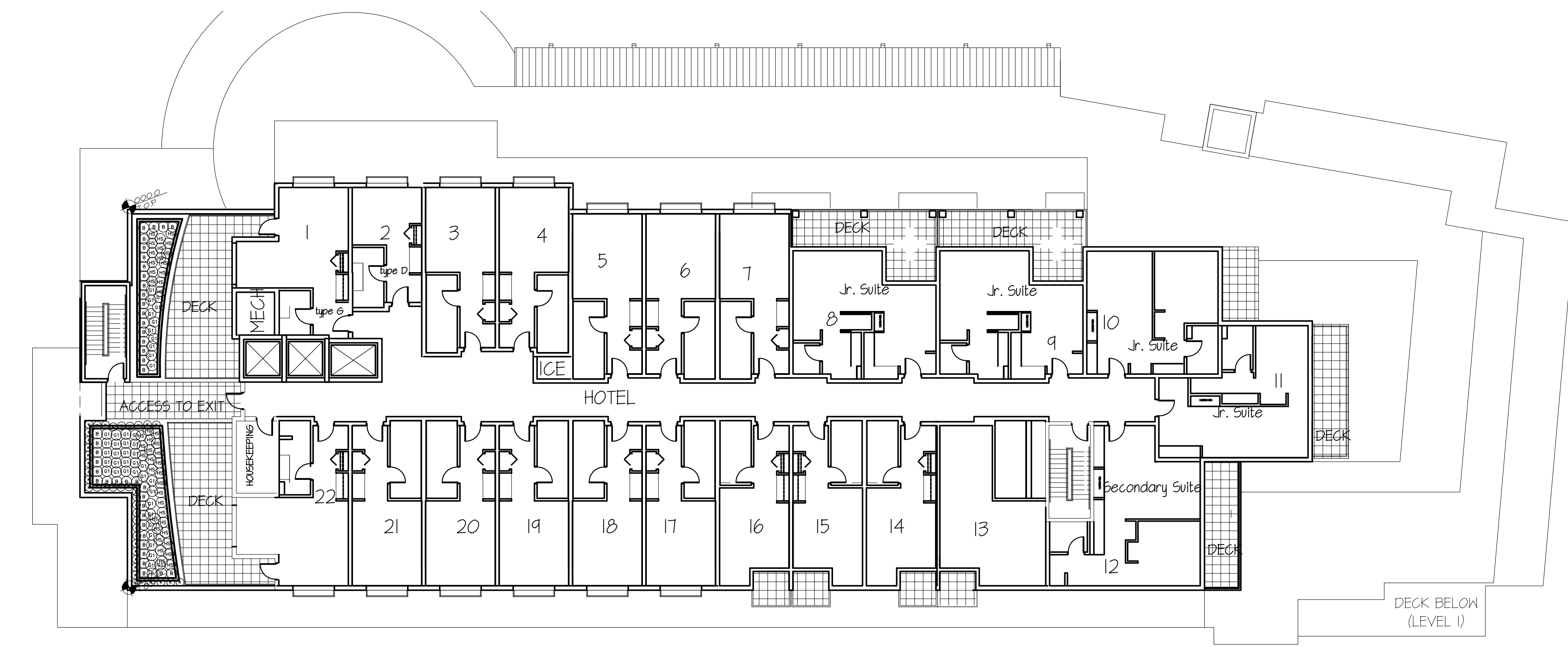
RESIDENTIAL LEVEL 2



RESTAURANT LEVEL 2

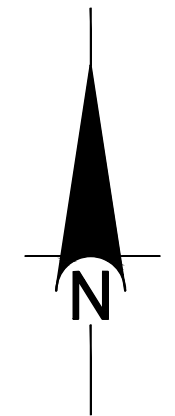
PLANT SCHEDULE				PMG PROJECT NUM
KEY	QTY	BOTANICAL NAME	COMMON NAME	PLANTED SIZE / REMARKS
(B)	98	BERBERIS THUNBERGII 'ROYAL BURGUNDY'	ROYAL BURGUNDY'BARBERRY	#2 POT; 30CM
(S)	14	SARCOCOCCA HOOKERANA VAR. HUMILIS	HIMALAYAN SWEET BOX	#2 POT; 25CM
(HS)	27	CAREX OSHIMENSIS 'EVERGOLD'	EVERGOLD JAPANESE SEDGE	#1 POT
(GC)	93	ERICA CARNEA 'SPRINGWOOD WHITE'	WINTER HEATH; WHITE	#1 POT
NOTES: * PLANT SIZES IN THIS LIST ARE SPECIFIED ACCORDING TO THE BC LANDSCAPE STANDARD AND CANADIAN LANDSCAPE STANDARD, LATEST EDITION. . CC				

PLANT SCHEDULE			RESTAURANT - LEVEL 2	PMG PROJECT NUMBER: 12-196
KEY	QTY	BOTANICAL NAME	COMMON NAME	PLANTED SIZE / REMARKS
TREE	1	ACER PALMATUM 'OSAKASUKII'	JAPANESE MAPLE	2.5M HT
GRASS	34	HELICTOTRICHON SEMPERVIRENS	BLUE OAT GRASS	#1 POT
GS	12	STIPA TENUISSIMA	MEXICAN FEATHER GRASS	#1 POT
NOTES: * PLANT SIZES IN THIS LIST ARE SPECIFIED ACCORDING TO THE BC LANDSCAPE STANDARD, LATEST EDITION. CONTAINER SIZES SPECIFIED AS PER CNLA STANDARDS. BOTH PLANT SIZE AND CONTAINER SIZE ARE THE MINIMUM ACCEPTABLE SIZES. * REFER TO SPECIFICATIONS FOR DEFINED CONTAINER MEASUREMENTS AND OTHER PLANT MATERIAL REQUIREMENTS. * SEARCH AND REVIEW: MAKE PLANT MATERIAL AVAILABLE FOR OPTIONAL REVIEW BY LANDSCAPE ARCHITECT AT SOURCE OF SUPPLY. AREA OF SEARCH TO INCLUDE LOWER MAINLAND AND FRASER VALLEY. * SUBSTITUTIONS: OBTAIN WRITTEN APPROVAL FROM THE LANDSCAPE ARCHITECT PRIOR TO MAKING ANY SUBSTITUTIONS TO THE SPECIFIED MATERIAL. UNAPPROVED SUBSTITUTIONS WILL BE REJECTED. ALLOW A MINIMUM OF FIVE DAYS PRIOR TO DELIVERY FOR REQUEST TO SUBSTITUTE. SUBSTITUTIONS ARE SUBJECT TO BC LANDSCAPE STANDARD - DEFINITION OF CONDITIONS OF AVAILABILITY. ALL LANDSCAPE MATERIAL AND WORKMANSHIP MUST MEET OR EXCEED BC LANDSCAPE STANDARD'S LATEST EDITION. ALL PLANT MATERIAL MUST BE PROVIDED FROM CERTIFIED DISEASE FREE NURSERY				



HOTEL LEVEL 6

PLANT SCHEDULE				
KEY	QTY	BOTANICAL NAME	COMMON NAME	PLANTED SIZE / REMARKS
SHRUB				
(B)	42	BERBERIS THUNBERGII 'ROYAL BURGUNDY'	'ROYAL BURGUNDY'BARBERRY	#2 POT; 30CM
GRASS				
(HS)	43	CAREX OSHIMENSIS 'EVERGOLD'	EVERGOLD JAPANESE SEDGE	#1 POT
GC				
(K)	41	ARCTOSTAPHYLOS UVA-URSI 'MASSACHUSETTS'	KINNICKINICK	#1 POT; 20CM
(G1)	43	ERICA CARNEA 'SPRINGWOOD WHITE'	WINTER HEATH; WHITE	#1 POT
(G1)	43	ERICA CARNEA 'SPRINGWOOD WHITE'	WINTER HEATH; WHITE	#1 POT
NOTES: * PLANT SIZES IN THIS LIST ARE SPECIFIED ACCORDING TO THE BC LANDSCAPE STANDARD AND CANADIAN LANDSCAPE STANDARD, LATEST EDITION. CONTAINER SIZES SPECIFIED AS PER CNLA STANDARD. BOTH PLANT SIZE AND CONTAINER SIZE ARE THE MINIMUM ACCEPTABLE SIZES. * REFER TO SPECIFICATIONS FOR DEFINED CONTAINER MEASUREMENTS AND OTHER PLANT MATERIAL REQUIREMENTS. * SEARCH AND REVIEW: MAKE PLANT MATERIAL AVAILABLE FOR OPTIONAL REVIEW BY LANDSCAPE ARCHITECT AT SOURCE OF SUPPLY. AREA OF SEARCH TO INCLUDE LOWER MAINLAND AND FRASER VALLEY. * SUBSTITUTIONS: OBTAIN WRITTEN APPROVAL FROM THE LANDSCAPE ARCHITECT PRIOR TO MAKING ANY SUBSTITUTIONS TO THE SPECIFIED MATERIAL. UNAPPROVED SUBSTITUTIONS WILL BE REJECTED. ALLOW A MINIMUM OF FIVE DAYS PRIOR TO DELIVERY FOR REQUEST TO SUBSTITUTE. SUBSTITUTIONS ARE SUBJECT TO BC LANDSCAPE STANDARD AND CANADIAN LANDSCAPE STANDARD - DEFINITION OF CONDITIONS OF AVAILABILITY. * ALL LANDSCAPE MATERIAL AND WORKMANSHIP MUST MEET OR EXCEED BC LANDSCAPE STANDARD AND CANADIAN LANDSCAPE STANDARD LATEST EDITION. * ALL PLANT MATERIAL MUST BE PROVIDED FROM CERTIFIED DISEASE FREE NURSERY. * BIO-SOLIDS NOT PERMITTED IN GROWING MEDIUM UNLESS AUTHORIZED BY LANDSCAPE ARCHITECT.				



T: 604.988.3033 F: 604.983.3454 W: WWW.BALANCED.CA

Elderberry	Snow berry
Nootka Rose	Carex
Ocean Spray	Dunegrass
Prickly Rose	Sea Arrow -grass
Red Elderberry	Sea plantain
Salmonberry	Pickleweed

