

A COMMUNITY DIALOGUE

*"Nature is our most valuable asset."*

# Protecting Gibsons' Water

Thursday, April 23, 2026

To learn more, go to [gibsons.ca/aquifer](https://gibsons.ca/aquifer)



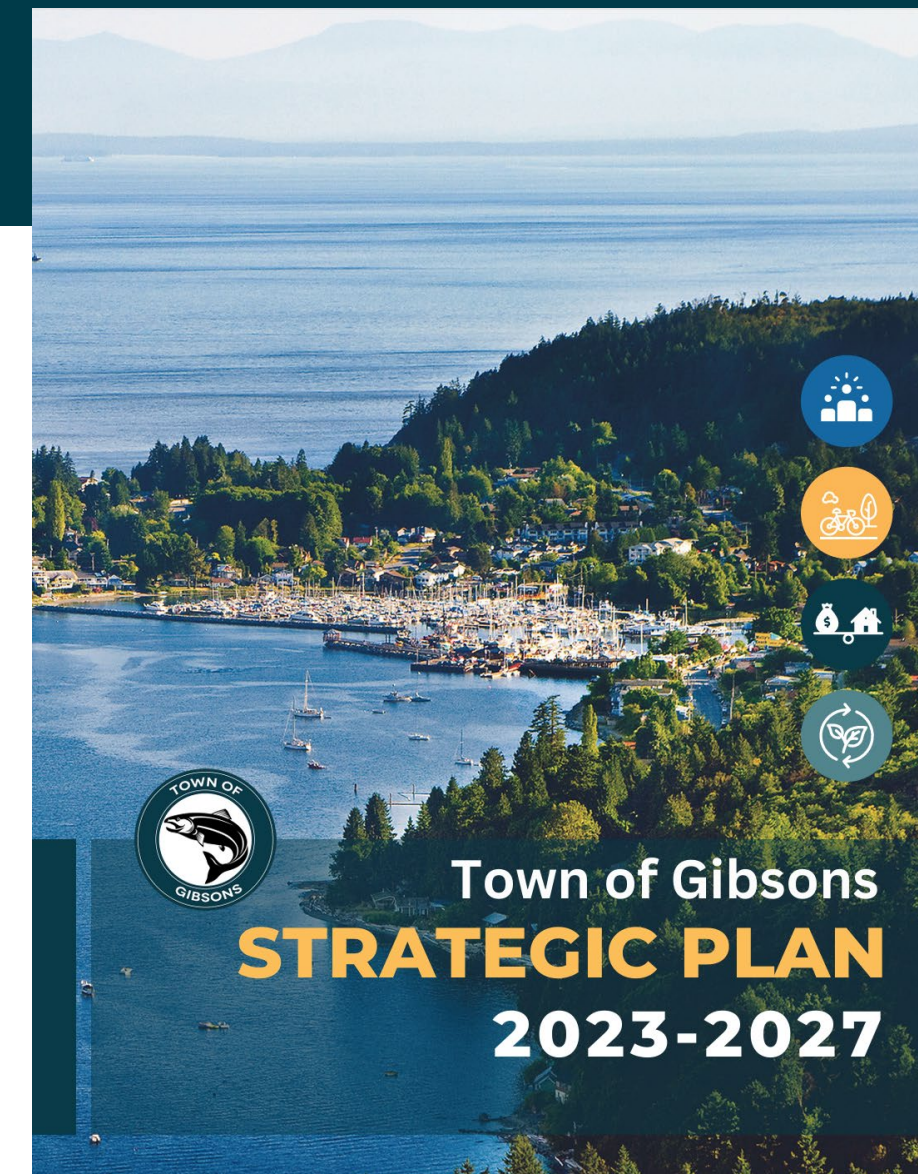
# 2023-2027 Strategic Plan

## GOAL 9

Ensure aquifer and watershed protection to continue to deliver safe and sustainable water supply to the community.

### Objectives

- Collaborate with the Squamish Nation on leading local water governance and watershed security. → **Progress made**
- Investigate the upper reaches of the Chaster Creek and Gibson Creek watersheds to assess the recharge characteristics of Aquifer 560 and its component aquifer lobes. → **Progress made**
- Install additional monitoring wells to further characterize the Capilano Aquifer and the confining unit of Aquifer 560. → **Completed**
- Continue with the monitoring program of Aquifer 560, precipitation in the watershed and creek flow. → **In progress, to be completed in 2026**
- Develop a Watershed Management Area Plan to enhance the protection of Aquifer 560, including:
  - Risk Management Policy
  - Water Sustainability Plan
  - Groundwater Sustainability Assessment
  - Wellhead Protection Plan
  - Emergency Response Plan→ **In progress**
- Implement the recommendations of the 2021 Aquifer Mapping Study Update. → **In progress**

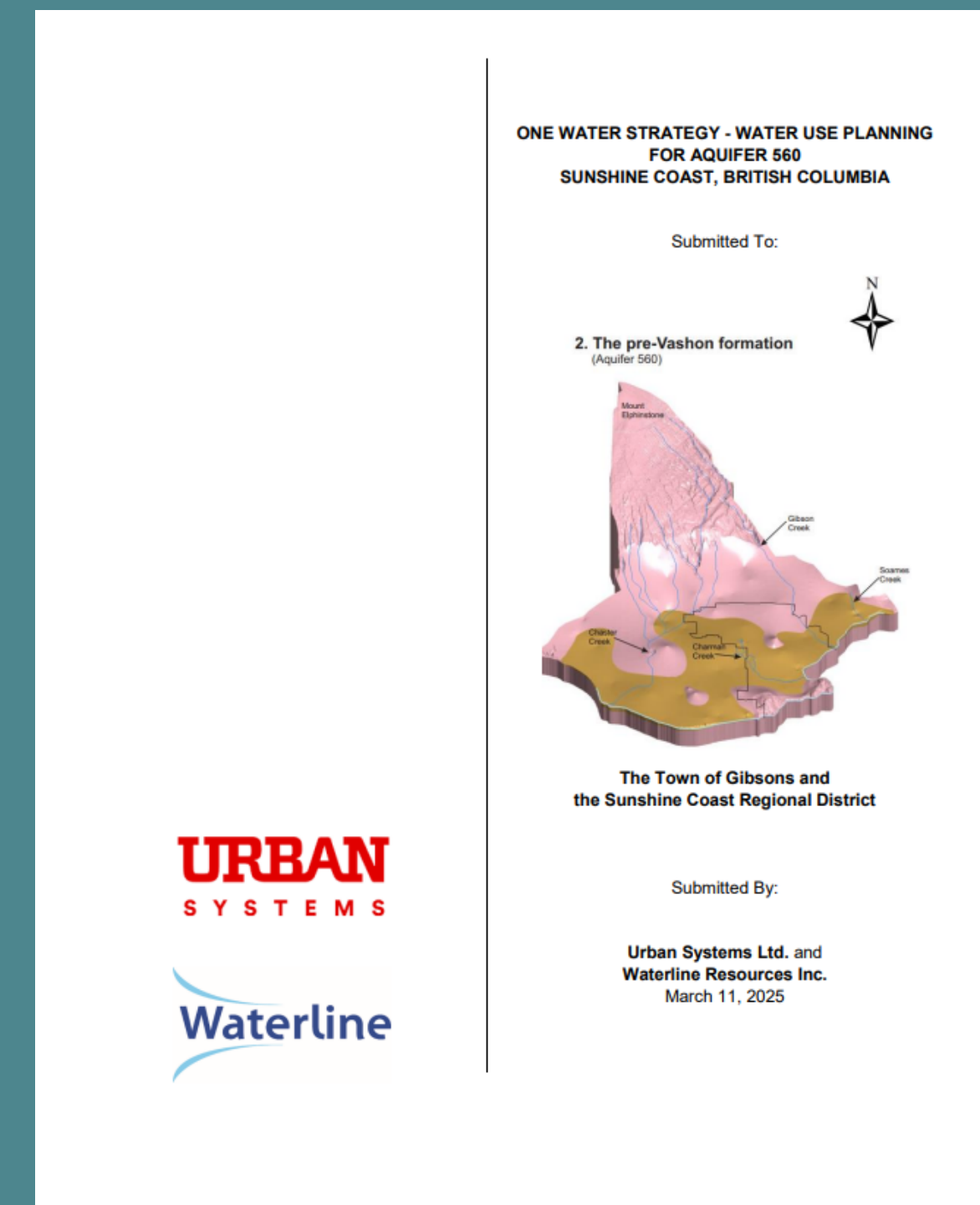
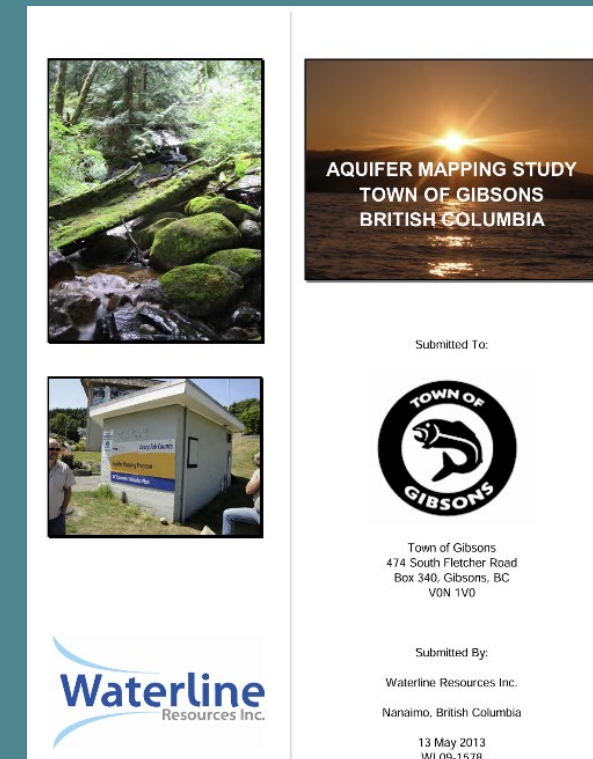




# Building our Understanding

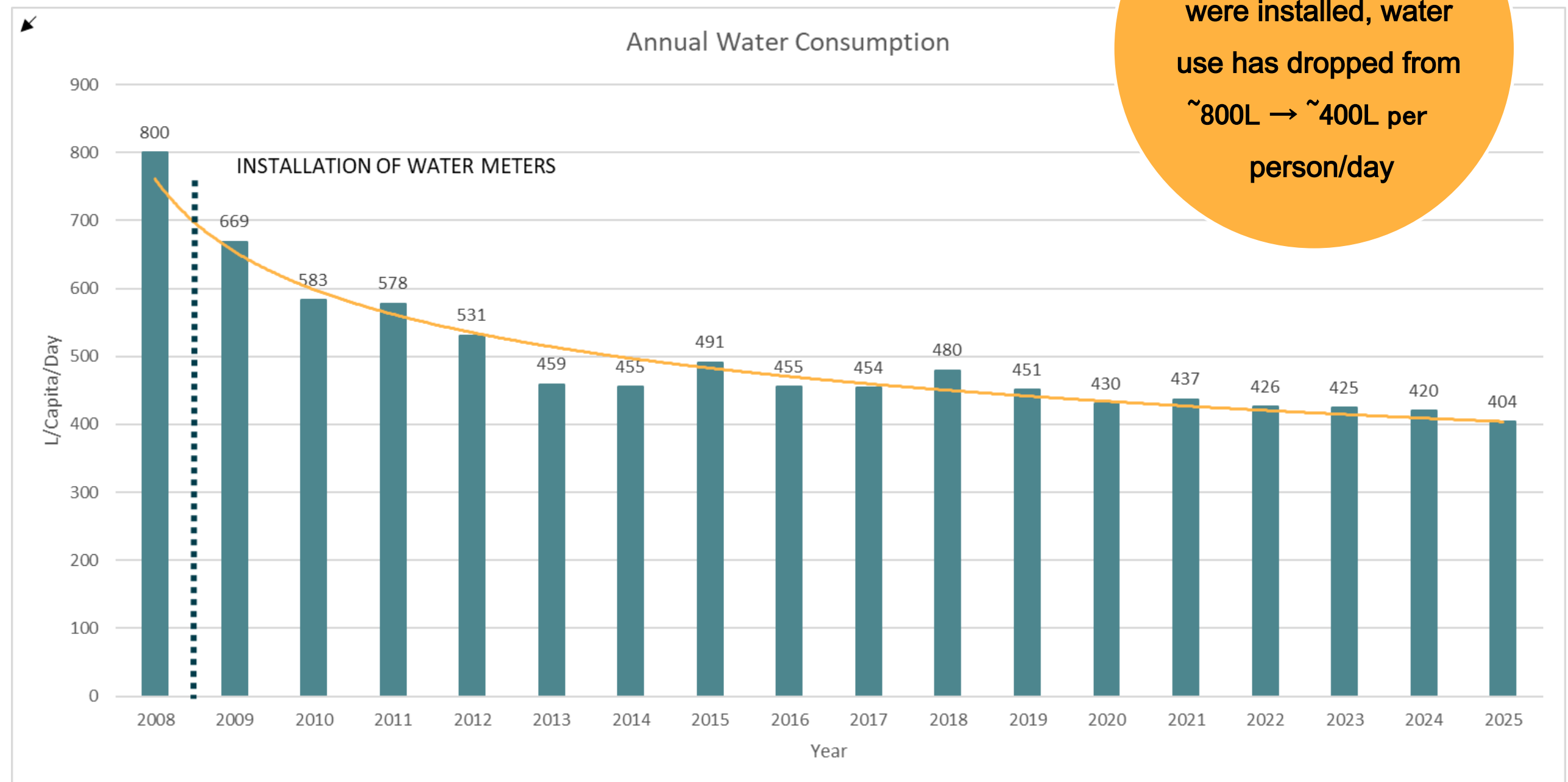
The Town's ongoing and upcoming work:

- Aquifer mapping study update
- Leapfrog model update
- One Water Strategy
- Update water strategic plan (2027)



# Managing Water Use

- Universal water metering since 2009
- Implemented a user-pay system
- Prioritizing leak detection + encouraging conservation



Since water meters were installed, water use has dropped from ~800L → ~400L per person/day

# Monitoring & Stewardship

The Town closely monitors Aquifer 560 and the Watershed to ensure a safe, sustainable water supply.

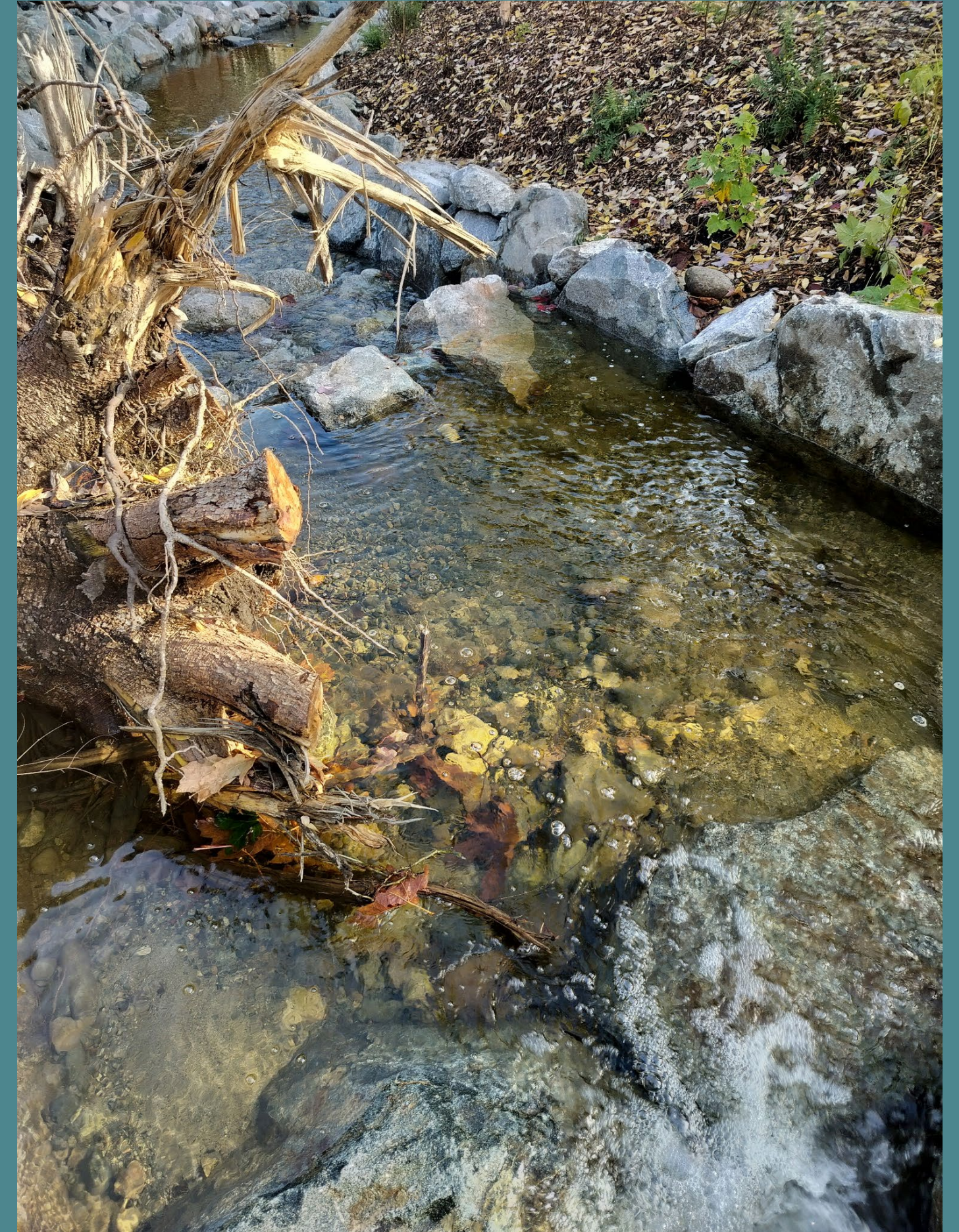
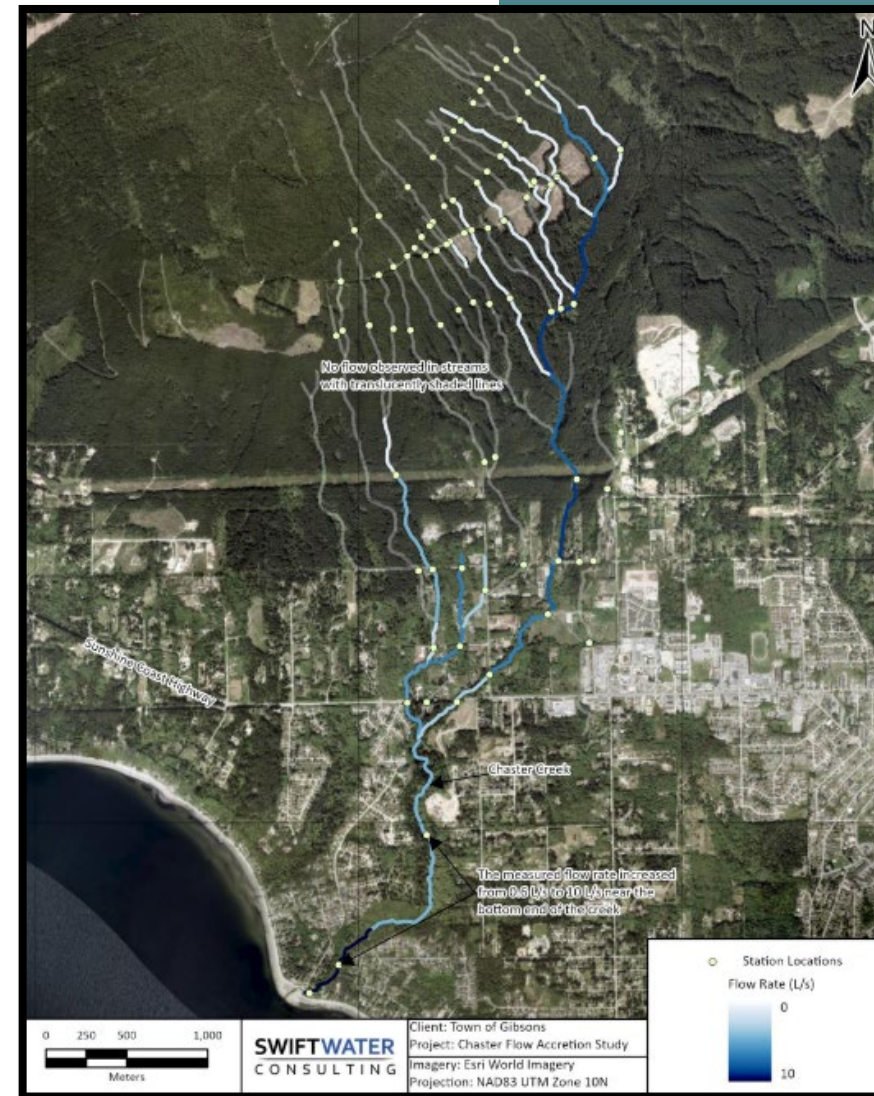
- Water volume is tracked hourly from each well.
- Real-time sensors show the water level at each well location.
- An annual monitoring program tracks trends in water levels, quality, and recharge rates.
- Ongoing data collection helps assess the aquifer's capacity under various demand and climate scenarios.



# Restoration & Research

The Town's ongoing and upcoming work:

- Restoring Natural Systems
- Understanding Recharge Areas
- Flow Accretion Studies
- Monitoring Wells



# We're working to protect the aquifer from:



Contamination



Saltwater Intrusion



Development

## By implementing:

### → **Aquifer Protection Development Permit Areas**

Introduced in the new OCP, this DPA outlines the development requirements to protect the aquifer and aquitard.

### → **Subdivision servicing and stormwater management bylaw**

The bylaw requires developers to manage stormwater on-site and ensures erosion and sediment control measures are in place.

### → **Aquifer Protection Bylaw**

This bylaw limits ground disturbance in sensitive areas and requires permits and careful review for any activities that could affect the aquifer.

### → **Water Regulation Bylaw**

The bylaw has requirements for universal metering, watering restrictions, and leak detection.

### → **Watershed Collaboration & Advocacy**

Aquifer 560 extends beyond town boundaries, so Gibsons collaborates with the Sunshine Coast Regional District

### → **Tree Protection Bylaw**

This bylaw aims to preserve and protect trees which reduce stormwater run-off and increase recharge



Questions?

Concerns?

What matters to you?

